

## CD3 monoclonal antibody

Catalog: MB21051

Host: Mouse

Reactivity: Human

### BackGround:

CD3 is a component of T cell surface receptor (TCR), it contains 5 invariable chains: gamma-, delta-, epsilon-, and zeta/eta. Clevers et al. (1988) showed the TCR/CD3 complex consists of either a TCR alpha/beta or TCR gamma/delta heterodimer coexpressed at the cell surface with the invariant subunits, CD3 is responsible for the signal transduction of the TCR.

### Product:

Purified antibody in PBS with 0.05% sodium azide

### Molecular Weight:

### Swiss-Prot:

P20963

### Purification&Purity:

The antibody was affinity-purified from mouse ascites by affinity-chromatography using epitope-specific immunogen and the purity is > 95% (by SDS-PAGE).

### Applications:

IF: 1/200 - 1/1000

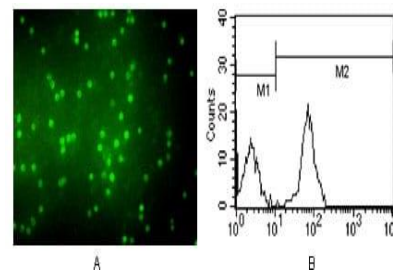
### Storage&Stability:

Store at 4 °C short term. Aliquot and store at -20 °C long term. Avoid freeze-thaw cycles.

### Isotype:

Mouse IgG2a

### DATA:



Immunofluorescence analysis of peripheral blood T cells using CD3 mouse mAb (A) and flow cytometric analysis of peripheral blood T cells using CD3 mouse mAb (B).

### Note:

For research use only, not for use in diagnostic procedure.

### Bioworld Technology, Inc.

Add: 1660 South Highway 100, Suite 500 St. Louis Park, MN 55416, USA.

Email: [info@bioworld.com](mailto:info@bioworld.com)

Tel: 6123263284

Fax: 6122933841

### Bioworld technology, co. Ltd.

Add: No 9, weidi road Qixia District Nanjing, 210046, P. R. China.

Email: [info@biogot.com](mailto:info@biogot.com)

Tel: 0086-025-68037686

Fax: 0086-025-68035151