

FBXL18 polyclonal antibody

Catalog: BS9962M

Host: Rabbit

Reactivity: Human, Mouse

BackGround:

FBXL18 (F-box and leucine-rich repeat protein 18), also known as FBXL18, is an 805 amino acid protein that contains an F-box near its N-terminus, followed by several leucine-rich repeats and a transmembrane domain at the C-terminus. F-box proteins are critical components of the SCF (Skp1-CUL-1-F-box protein) type E3 ubiquitin ligase complex and are involved in substrate recognition and recruitment for ubiquitination. They are members of a larger family of proteins that are involved in the regulation of a wide variety of cellular processes (including the cell cycle, immune response, signaling cascades and developmental processes) through the targeting of proteins, such as cyclins and cyclin-dependent kinase inhibitors (CDKNs), for degradation by the proteasome after ubiquitination.

Product:

Recombinant Rabbit Monoclonal Antibody. 1*TBS (pH7.4), 1%BSA, 40%Glycerol. Preservative: 0.05% Sodium Azide.

Molecular Weight:

~ 40, 88 kDa

Swiss-Prot:

Q96ME1

Purification&Purity:

Protein A affinity purified.

Applications:

WB: 1:500

IHC: 1:50-1:200

FC: 1:50-1:100

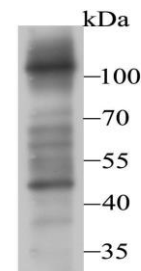
Storage&Stability:

Store at 4 °C short term. Aliquot and store at -20 °C long term. Avoid freeze-thaw cycles.

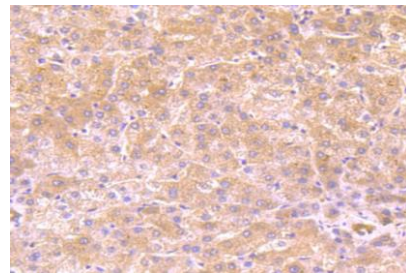
Specificity:

This antibody detects endogenous levels of FBXL18 and does not cross-react with related proteins.

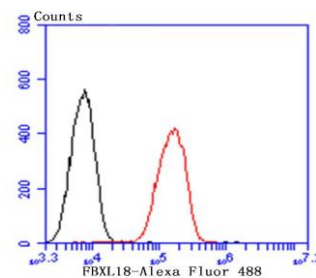
DATA:



Western blot analysis of FBXL18 on PC-3M cell lysate using anti-FBXL18 antibody at 1:500 dilution.



Immunohistochemical analysis of paraffin-embedded human liver tissue using anti-FBXL18 antibody. Counter stained with hematoxylin.



Flow cytometric analysis of A549 cells with FBXL18 antibody at 1/100 dilution (red) compared with an unlabelled control (cells without incubation with primary antibody; black). Alexa Fluor 488-conjugated goat anti-rabbit IgG was used as the secondary antibody.

Note:

For research use only, not for use in diagnostic procedure.

Bioworld Technology, Inc.

Add: 1660 South Highway 100, Suite 500 St. Louis Park, MN 55416, USA.

Email: info@bioworld.com

Tel: 6123263284

Fax: 6122933841

Bioworld technology, co. Ltd.

Add: No 9, weidi road Qixia District Nanjing, 210046, P. R. China.

Email: info@biogot.com

Tel: 0086-025-68037686

Fax: 0086-025-68035151



PRODUCT DATA SHEET

Bioworld Technology, Inc.

Bioworld Technology, Inc.

Add: 1660 South Highway 100, Suite 500 St. Louis Park,
MN 55416, USA.

Email: info@bioworld.com

Tel: 6123263284

Fax: 6122933841

Bioworld technology, co. Ltd.

Add: No 9, weidi road Qixia District Nanjing, 210046,
P. R. China.

Email: info@biogot.com

Tel: 0086-025-68037686

Fax: 0086-025-68035151