

GPER Rabbit monoclonal antibody

Catalog: BS66287

Host: Rabbit

Reactivity: Human, Mouse, Rat

BackGround:

This gene is a member of the G-protein coupled receptor 1 family and encodes a multi-pass membrane protein that localizes to the endoplasmic reticulum. The protein binds estrogen, resulting in intracellular calcium mobilization and synthesis of phosphatidylinositol 3,4,5-trisphosphate in the nucleus. This protein therefore plays a role in the rapid nongenomic signaling events widely observed following stimulation of cells and tissues with estrogen. Alternate transcriptional splice variants which encode the same protein have been characterized.

Product:

1mg/ml in PBS with 0.02% sodium azide, 50% glycerol, pH7.2

Molecular Weight:

55KDa

Swiss-Prot:

Q99527

Purification&Purity:

The antibody was purified by immunogen affinity chromatography.

Applications:

WB, 1:500 - 1:1000 | IHC, 1:50 - 1:200 | IF/ICC, 1:50 - 1:200

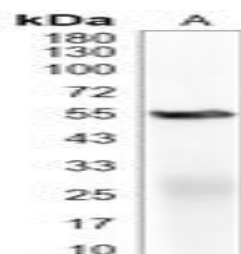
Storage&Stability:

Store at 4 °C short term. Aliquot and store at -20 °C long term. Avoid freeze-thaw cycles.

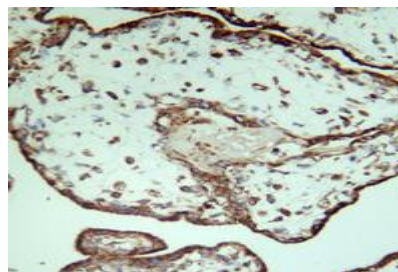
Specificity:

GPER Rabbit monoclonal antibody detects endogenous levels of GPER protein.

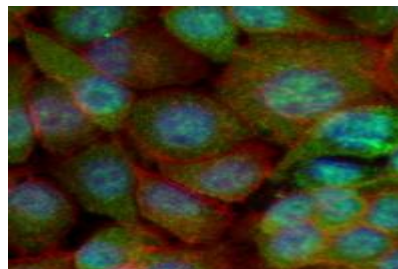
DATA:



Western blot analysis of GPER expression in mouse brain (A) whole cell lysates.



Immunohistochemical analysis of GPER staining in human placenta formalin fixed paraffin embedded tissue section.



Immunofluorescent analysis of GPER staining in ASPC1 cells.

Note:

For research use only, not for use in diagnostic procedure.

Bioworld Technology, Inc.

Add: 1660 South Highway 100, Suite 500 St. Louis Park, MN 55416, USA.

Email: info@bioworld.com

Tel: 6123263284

Fax: 6122933841

Bioworld technology, co. Ltd.

Add: No 9, weidi road Qixia District Nanjing, 210046, P. R. China.

Email: info@biogot.com

Tel: 0086-025-68037686

Fax: 0086-025-68035151