

IRE1 Rabbit monoclonal antibody

Catalog: BS66286

Host: Rabbit

Reactivity: Human, Mouse, Rat

BackGround:

The protein encoded by this gene is the ER to nucleus signalling 1 protein, a human homologue of the yeast Ire1 gene product. This protein possesses intrinsic kinase activity and an endoribonuclease activity and it is important in altering gene expression as a response to endoplasmic reticulum-based stress signals.

Product:

1mg/ml in PBS with 0.02% sodium azide, 50% glycerol, pH7.2

Molecular Weight:

~ 110 kDa

Swiss-Prot:

O75460

Purification&Purity:

The antibody was purified by immunogen affinity chromatography.

Applications:

WB: 1:500~1:1000

IHC: 1:50~1:200

IF/ICC: 1:50~1:200

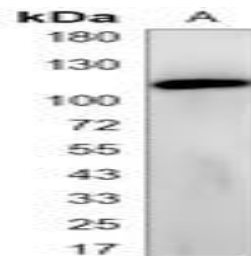
IP: 1:10~1:50

Storage&Stability:

Store at 4 °C short term. Aliquot and store at -20 °C long term. Avoid freeze-thaw cycles.

Specificity:

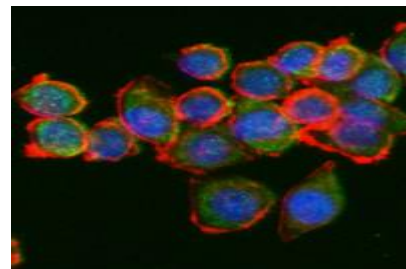
IRE1 Rabbit monoclonal antibody detects endogenous levels of IRE1 protein.

DATA:

Western blot analysis of IRE1 expression in A549 (A) whole cell lysates.



Immunohistochemical analysis of IRE1 staining in human brain formalin fixed paraffin embedded tissue section.



Immunofluorescent analysis of IRE1 staining in A549 cells.

Note:

For research use only, not for use in diagnostic procedure.

Bioworld Technology, Inc.

Add: 1660 South Highway 100, Suite 500 St. Louis Park, MN 55416, USA.

Email: info@bioworld.com

Tel: 6123263284

Fax: 6122933841

Bioworld technology, co. Ltd.

Add: No 9, weidi road Qixia District Nanjing, 210046, P. R. China.

Email: info@biogot.com

Tel: 0086-025-68037686

Fax: 0086-025-68035151