

## CCDC109A Rabbit monoclonal antibody

Catalog: BS66285

Host: Rabbit

Reactivity: Human, Mouse, Rat

### BackGround:

This gene encodes a calcium transporter that localizes to the mitochondrial inner membrane. The encoded protein interacts with mitochondrial calcium uptake 1. Alternative splicing results in multiple transcript variants.

### Product:

1mg/ml in PBS with 0.02% sodium azide, 50% glycerol, pH7.2

### Molecular Weight:

~ 32 kDa

### Swiss-Prot:

Q8NE86

### Purification&Purity:

The antibody was purified by immunogen affinity chromatography.

### Applications:

WB, 1:500 - 1:1000 | IHC, 1:50 - 1:200 | IF/ICC, 1:50 - 1:200

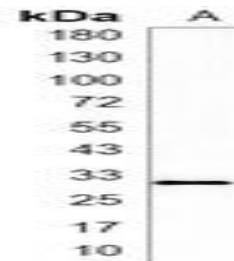
### Storage&Stability:

Store at 4 °C short term. Aliquot and store at -20 °C long term. Avoid freeze-thaw cycles.

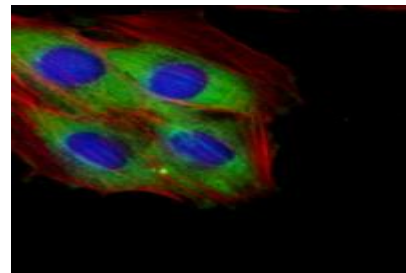
### Specificity:

CCDC109A Rabbit monoclonal antibody detects endogenous levels of CCDC109A protein.

### DATA:



Western blot analysis of CCDC109A expression in A549 (A) whole cell lysates.



Immunofluorescent analysis of CCDC109A staining in A549 cells.

### Note:

For research use only, not for use in diagnostic procedure.

### Bioworld Technology, Inc.

Add: 1660 South Highway 100, Suite 500 St. Louis Park, MN 55416, USA.

Email: [info@bioworld.com](mailto:info@bioworld.com)

Tel: 6123263284

Fax: 6122933841

### Bioworld technology, co. Ltd.

Add: No 9, weidi road Qixia District Nanjing, 210046, P. R. China.

Email: [info@biogot.com](mailto:info@biogot.com)

Tel: 0086-025-68037686

Fax: 0086-025-68035151