

SERCA2 Rabbit monoclonal antibody

Catalog: BS66284

Host: Rabbit

Reactivity: Human, Mouse, Rat

BackGround:

This magnesium-dependent enzyme catalyzes the hydrolysis of ATP coupled with the translocation of calcium from the cytosol to the sarcoplasmic reticulum lumen. Isoform 2 is involved in the regulation of the contraction/relaxation cycle.

Product:

Rabbit IgG, 1mg/ml in PBS with 0.02% sodium azide, 50% glycerol, pH7.2

Molecular Weight:

~ 110, 140 kDa

Swiss-Prot:

P16615

Purification&Purity:

The antibody was purified by immunogen affinity chromatography.

Applications:

WB, 1:500 - 1:1000 | IHC, 1:50 - 1:200 | IF/ICC, 1:50 - 1:200 | FC, 1:10 - 1:50

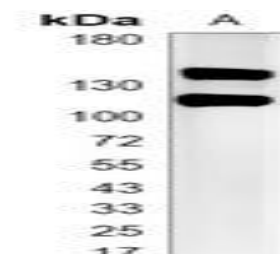
Storage&Stability:

Store at 4 °C short term. Aliquot and store at -20 °C long term. Avoid freeze-thaw cycles.

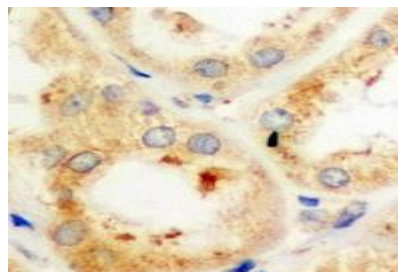
Specificity:

SERCA2 Rabbit monoclonal antibody detects endogenous levels of SERCA2 protein.

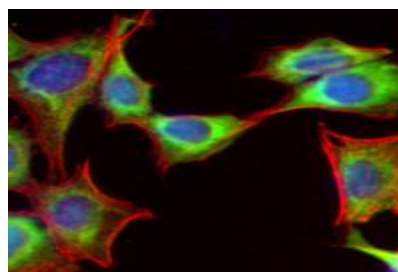
DATA:



Western blot analysis of SERCA2 expression in HeLa (A) whole cell lysates.



Immunohistochemical analysis of SERCA2 staining in human kidney formalin fixed paraffin embedded tissue section.



Immunofluorescent analysis of SERCA2 staining in HeLa cells.

Note:

For research use only, not for use in diagnostic procedure.

Bioworld Technology, Inc.

Add: 1660 South Highway 100, Suite 500 St. Louis Park, MN 55416, USA.

Email: info@bioworld.com

Tel: 6123263284

Fax: 6122933841

Bioworld technology, co. Ltd.

Add: No 9, weidi road Qixia District Nanjing, 210046, P. R. China.

Email: info@biogot.com

Tel: 0086-025-68037686

Fax: 0086-025-68035151