

Collagen 7 alpha 1 polyclonal antibody

Catalog: BS66276

Host: Rabbit

Reactivity: Human, Mouse, Rat

Background:

Stratified squamous epithelial basement membrane protein that forms anchoring fibrils which may contribute to epithelial basement membrane organization and adherence by interacting with extracellular matrix (ECM) proteins such as type IV collagen.

Product:

Rabbit IgG, 1mg/ml in PBS with 0.02% sodium azide, 50% glycerol, pH7.2

Molecular Weight:

~ 295 kDa

Swiss-Prot:

Q02388

Purification&Purity:

The antibody was affinity-purified from rabbit antiserum by affinity-chromatography using epitope-specific immunogen and the purity is > 95% (by SDS-PAGE).

Applications:

WB, 1:500 - 1:1000 | IHC, 1:50 - 1:200 | IF/ICC, 1:100 - 1:500

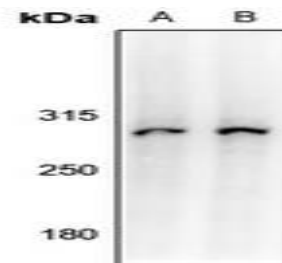
Storage&Stability:

Store at 4 °C short term. Aliquot and store at -20 °C long term. Avoid freeze-thaw cycles.

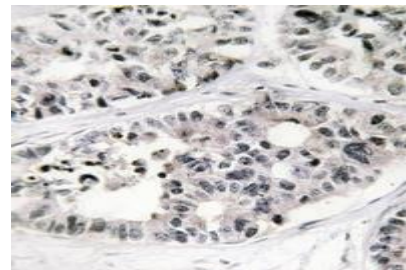
Specificity:

Collagen 7 alpha 1 polyclonal antibody detects endogenous levels of Collagen 7 alpha 1 protein.

DATA:



Western blot analysis of Collagen 7 alpha 1 expression in rat brain (A), mouse brain (B) whole cell lysates.



Immunohistochemical analysis of Collagen 7 alpha 1 staining in human lung cancer formalin fixed paraffin embedded tissue section.



Immunofluorescent analysis of Collagen 7 alpha 1 staining in COS7 cells.

Note:

For research use only, not for use in diagnostic procedure.

Bioworld Technology, Inc.

Add: 1660 South Highway 100, Suite 500 St. Louis Park, MN 55416, USA.

Email: info@bioworld.com

Tel: 6123263284

Fax: 6122933841

Bioworld technology, co. Ltd.

Add: No 9, weidi road Qixia District Nanjing, 210046, P. R. China.

Email: info@biogot.com

Tel: 0086-025-68037686

Fax: 0086-025-68035151