

SDHB Rabbit monoclonal antibody

Catalog: BS66258

Host: Rabbit

Reactivity: Human Mouse Rat

BackGround:

Iron-sulfur protein (IP) subunit of succinate dehydrogenase (SDH) that is involved in complex II of the mitochondrial electron transport chain and is responsible for transferring electrons from succinate to ubiquinone (co-enzyme Q).

Product:

Rabbit IgG, 1mg/ml in PBS with 0.02% sodium azide, 50% glycerol, pH7.2.

Molecular Weight:

28kDa

Swiss-Prot:

P21912

Purification&Purity:

The antibody was purified by immunogen affinity chromatography.

Applications:

WB, 1:500 - 1:2000 | IHC, 1:50 - 1:200 | IF/ICC, 1:50 - 1:200

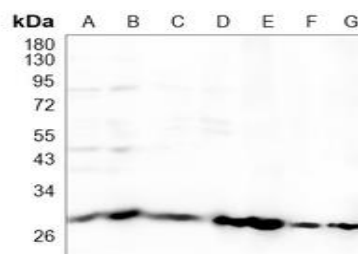
Storage&Stability:

Store at 4 °C short term. Aliquot and store at -20 °C long term. Avoid freeze-thaw cycles.

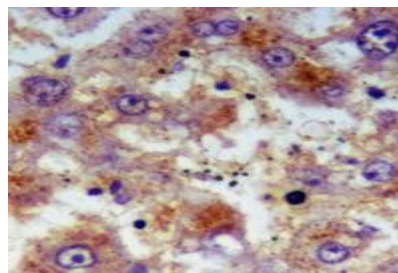
Specificity:

SDHB Rabbit monoclonal antibody detects endogenous levels of SDHB protein

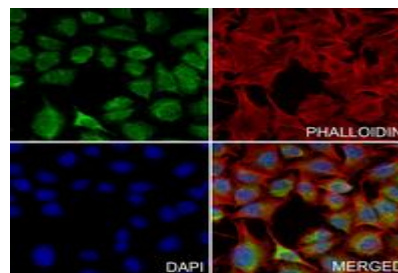
DATA:



Western blot analysis of SDHB expression in A549 (A), K562 (B), THP1 (C), mouse liver (D), mouse kidney (E), rat liver (F), rat kidney (G) whole cell lysates.



Immunohistochemical analysis of SDHB staining in human liver cancer formalin fixed paraffin embedded tissue section.



Immunofluorescent analysis of SDHB staining in A375 cells.

Note:

For research use only, not for use in diagnostic procedure.

Bioworld Technology, Inc.

Add: 1660 South Highway 100, Suite 500 St. Louis Park, MN 55416, USA.

Email: info@bioworld.com

Tel: 6123263284

Fax: 6122933841

Bioworld technology, co. Ltd.

Add: No 9, weidi road Qixia District Nanjing, 210046, P. R. China.

Email: info@biogot.com

Tel: 0086-025-68037686

Fax: 0086-025-68035151