

PIF1 polyclonal antibody

Catalog: BS60114

Host: Rabbit

Reactivity: Human, Mouse, Rat

BackGround:

PIF1 is a single-stranded (ss) DNA-dependent ATPase as well as a DNA helicase that unwinds DNA in a 5' to 3' direction with respect to the DNA strand on which it binds first. This protein is critical to DNA replication and telomere length maintenance in *Saccharomyces cerevisiae*. The PIF1 gene is highly conserved from yeast to humans. Mutations in the gene that encodes for PIF1 cause all telomeres to lengthen, suggesting that the PIF1 functions as a catalytic inhibitor of both new telomere formation and telomere elongation. Human PIF1 preferentially binds telomeric DNA where it inhibits telomerase activity. PIF1 specifically counteracts the RecQ homolog Sgs1 helicase activity, and degradation of PIF1 is mediated by the ubiquitin-26S proteasome pathway.

Product:

1mg/ml in PBS with 0.1% Sodium Azide, 50% Glycerol.

Molecular Weight:

~ 70 kDa

Swiss-Prot:

Q9H611

Purification&Purity:

The antibody was affinity-purified from rabbit antiserum by affinity-chromatography using epitope-specific immunogen and the purity is > 95% (by SDS-PAGE).

Applications:

WB: 1:500~1:1000

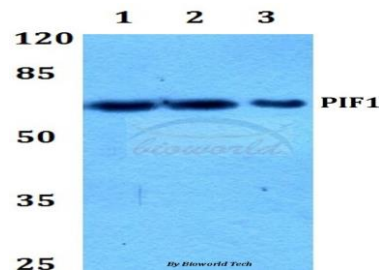
Storage&Stability:

Store at 4 °C short term. Aliquot and store at -20 °C long term. Avoid freeze-thaw cycles.

Specificity:

PIF1 polyclonal antibody detects endogenous levels of PIF1 protein.

DATA:



Western blot (WB) analysis of PIF1 polyclonal antibody at 1:500 dilution

Lane1:HeLa whole cell lysate

Lane2:Raw264.7 whole cell lysate

Lane3:PC12 whole cell lysate

Note:

For research use only, not for use in diagnostic procedure.

Bioworld Technology, Inc.

Add: 1660 South Highway 100, Suite 500 St. Louis Park, MN 55416, USA.

Email: info@bioworld.com

Tel: 6123263284

Fax: 6122933841

Bioworld technology, co. Ltd.

Add: No 9, weidi road Qixia District Nanjing, 210046, P. R. China.

Email: info@biogot.com

Tel: 0086-025-68037686

Fax: 0086-025-68035151