

## VE-Cadherin (phospho-Y731) polyclonal antibody

Catalog: BS4242

Host: Rabbit

Reactivity: Human, Mouse, Rat

### Background:

The cadherins are a family of Ca<sup>2+</sup>-dependent adhesion molecules that function to mediate cell-cell binding critical to the maintenance of tissue structure and morphogenesis. Cadherins each contain a large extracellular domain at the amino-terminus, which is characterized by a series of five homologous repeats, the most distal of which is thought to be responsible for binding specificity. The relatively short carboxy-terminal, intracellular domain interacts with a variety of cytoplasmic proteins, including  $\beta$ -catenin, to regulate cadherin function. VE-cadherin (for vascular endothelial cadherin, also designated cadherin-5) is localized at intercellular junctions of endothelial cells, where it is thought to play a role in the cohesion and organization of intercellular junctions.

### Product:

1 mg/ml in Phosphate buffered saline (PBS) with 0.05% sodium azide, approx. pH 7.2.

### Molecular Weight:

~ 130 kDa

### Swiss-Prot:

P33151

### Purification&Purity:

The antibody was affinity-purified from rabbit antiserum by affinity-chromatography using epitope-specific immunogen and the purity is > 95% (by SDS-PAGE).

### Applications:

WB: 1:500~1:1000

IHC: 1:50~1:200

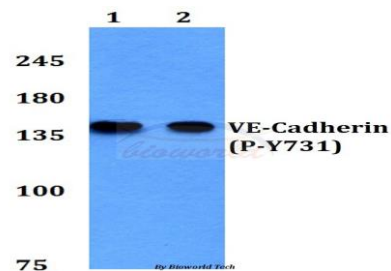
### Storage&Stability:

Store at 4 °C short term. Aliquot and store at -20 °C long term. Avoid freeze-thaw cycles.

### Specificity:

p-VE-Cadherin (Y731) polyclonal antibody detects endogenous levels of VE-Cadherin protein only when phosphorylated at Tyr731

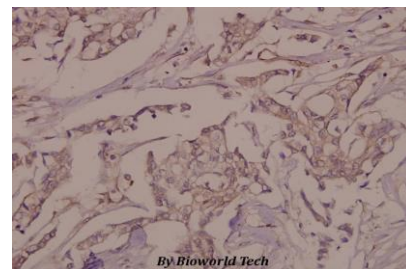
### DATA:



Western blot (WB) analysis of p-VE-Cadherin (Y731) polyclonal antibody at 1:500 dilution

Lane 1: HeLa cell lysate treated with EGF (0.1 ng/ml, 30 mins)

Lane 2: H9C2 cell lysate treated with EGF (0.1 ng/ml, 30 mins)



Immunohistochemistry (IHC) analyzes of p-VE-Cadherin (Y731) pAb in paraffin-embedded human breast carcinoma tissue at 1:50.

### Note:

For research use only, not for use in diagnostic procedure.

### Bioworld Technology, Inc.

Add: 1660 South Highway 100, Suite 500 St. Louis Park, MN 55416, USA.

Email: [info@bioworld.com](mailto:info@bioworld.com)

Tel: 6123263284

Fax: 6122933841

### Bioworld technology, co. Ltd.

Add: No 9, weidi road Qixia District Nanjing, 210046, P. R. China.

Email: [info@biogot.com](mailto:info@biogot.com)

Tel: 0086-025-68037686

Fax: 0086-025-68035151