

## IKK $\alpha$ / $\beta$ (phospho-S176/177) polyclonal antibody

Catalog: BS4236

Host: Rabbit

Reactivity: Human, Mouse

### BackGround:

The NF- $\kappa$ B/Rel transcription factors are present in the cytosol in an inactive state, complexed with the inhibitory I $\kappa$ B proteins. Most agents that activate NF- $\kappa$ B do so through a common pathway based on phosphorylation-induced, proteasome-mediated degradation of I $\kappa$ B. The key regulatory step in this pathway involves activation of a high molecular weight I $\kappa$ B kinase (IKK) complex whose catalysis is generally carried out by three tightly associated IKK subunits. IKK $\alpha$  and IKK $\beta$  serve as the catalytic subunits of the kinase and IKK $\gamma$  serves as the regulatory subunit. Activation of IKK depends upon phosphorylation at Ser177 and Ser181 in the activation loop of IKK $\beta$  (Ser176 and Ser180 in IKK $\alpha$ ), which causes conformational changes, resulting in kinase activation.

### Product:

1 mg/ml in Phosphate buffered saline (PBS) with 0.05% sodium azide, approx. pH 7.2.

### Molecular Weight:

~ 85 kDa

### Swiss-Prot:

O15111/O14920

### Purification&Purity:

The antibody was affinity-purified from rabbit antiserum by affinity-chromatography using epitope-specific immunogen and the purity is > 95% (by SDS-PAGE).

### Applications:

WB: 1:500~1:1000

IHC: 1:50~1:200

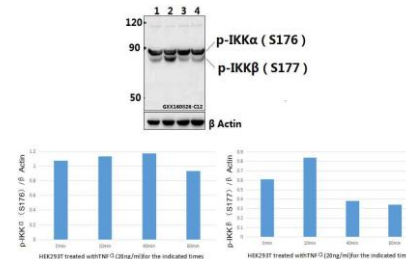
### Storage&Stability:

Store at 4  $^{\circ}$ C short term. Aliquot and store at -20  $^{\circ}$ C long term. Avoid freeze-thaw cycles.

### Specificity:

p-IKK $\alpha$ / $\beta$  (S176/177) polyclonal antibody detects endogenous levels of IKK $\alpha$ / $\beta$  protein only when phosphorylated at Ser176/177.

### DATA:



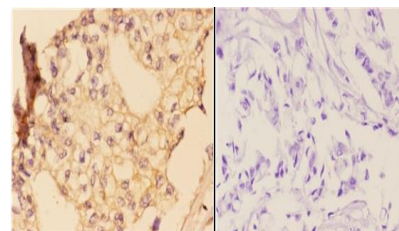
Western blot (WB) analysis of IKK $\alpha$ / $\beta$  (phospho-S176/177) polyclonal antibody at 1:500 dilution

Lane1:HEK293T whole cell lysate

Lane2:HEK293T treated with TNF $\alpha$ (20ng/ml)for 10 minutes whole cell lysate

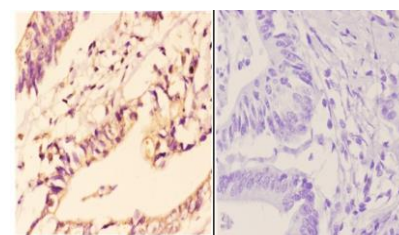
Lane3:HEK293T treated with TNF $\alpha$ (20ng/ml)for 40 minutes whole cell lysate

Lane4:HEK293T treated with TNF $\alpha$ (20ng/ml)for 1 hour whole cell lysate



BS4236  
Lot AA54132

Immunohistochemistry (IHC) analyzes of p-IKK $\alpha$ / $\beta$  (S176/177) pAb in paraffin-embedded human breast carcinoma tissue at 1:50, showing cytoplasmic and nuclear staining. Negative control (the right) Using PBS instead of primary antibody, secondary antibody is Goat Anti-Rabbit IgG-biotin followed by avidin-peroxidase.



BS4236  
Lot AA54132

### Bioworld Technology, Inc.

Add: 1660 South Highway 100, Suite 500 St. Louis Park, MN 55416, USA.

Email: [info@bioworld.com](mailto:info@bioworld.com)

Tel: 6123263284

Fax: 6122933841

### Bioworld technology, co. Ltd.

Add: No 9, weidi road Qixia District Nanjing, 210046, P. R. China.

Email: [info@biogot.com](mailto:info@biogot.com)

Tel: 0086-025-68037686

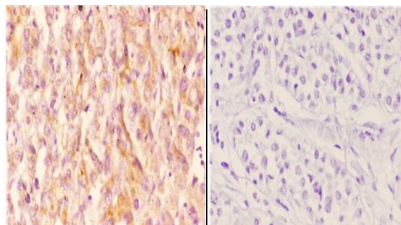
Fax: 0086-025-68035151



## PRODUCT DATA SHEET

Bioworld Technology, Inc.

Immunohistochemistry (IHC) analyzes of p-IKK $\alpha$ / $\beta$  (S176/177) pAb in paraffin-embedded human colon carcinoma tissue at 1:50, showing cytoplasmic and nuclear staining. Negative control (the right) Using PBS instead of primary antibody, secondary antibody is Goat Anti-Rabbit IgG-biotin followed by avidin-peroxidase.



BS4236  
Lot AAS4132

Immunohistochemistry (IHC) analyzes of p-IKK $\alpha$ / $\beta$  (S176/177) pAb in paraffin-embedded human liver carcinoma tissue at 1:50, showing cytoplasmic and nuclear staining. Negative control (the right) Using PBS instead of primary antibody, secondary antibody is Goat Anti-Rabbit

IgG-biotin followed by avidin-peroxidase.

### Note:

For research use only, not for use in diagnostic procedure.

### Bioworld Technology, Inc.

Add: 1660 South Highway 100, Suite 500 St. Louis Park, MN 55416, USA.

Email: [info@bioworld.com](mailto:info@bioworld.com)

Tel: 6123263284

Fax: 6122933841

### Bioworld technology, co. Ltd.

Add: No 9, weidi road Qixia District Nanjing, 210046, P. R. China.

Email: [info@biogot.com](mailto:info@biogot.com)

Tel: 0086-025-68037686

Fax: 0086-025-68035151