

## SEMA3C (E750) polyclonal antibody

Catalog: BS3705

Host: Rabbit

Reactivity: Human, Mouse, Rat

### Background:

SEMA3C (also designated Semaphorin 3C, Semaphorin E, SEMAE, SemE, sema domain, immunoglobulin domain (Ig) and short basic domain, secreted) is a ubiquitous protein of approximately 70 kDa that mediates axonal guidance, repulsive gradients, induction of growth cone collapse and cell survival/death. Secreted SEMA3C favors survival and neuritogenesis of cultured cerebellar granule neurons (CGNs). SEMA3C from macrophages and fibroblasts that selectively directs against sympathetic nerve fibers may be one element responsible for reduced sympathetic innervation in rheumatoid arthritis tissue. SEMA3C mutant mice die within hours after birth from congenital cardiovascular defects consisting of interruption of the aortic arch and improper septation of the cardiac outflow tract. SEMA3C is expressed in the cardiac outflow tract as neural crest cells and promotes crest cell migration into the proximal cardiac outflow tract.

### Product:

1 mg/ml in Phosphate buffered saline (PBS) with 0.05% sodium azide, approx. pH 7.2.

### Molecular Weight:

~ 85 kDa

### Swiss-Prot:

Q99985

### Purification&Purity:

The antibody was affinity-purified from rabbit antiserum by affinity-chromatography using epitope-specific immunogen and the purity is > 95% (by SDS-PAGE).

### Applications:

WB: 1:500~1:1000

IHC: 1:50~1:200

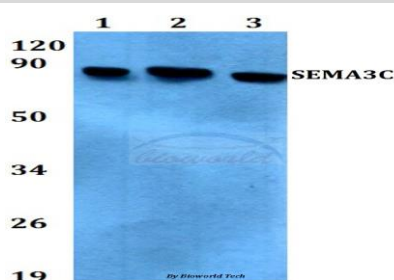
### Storage&Stability:

Store at 4 °C short term. Aliquot and store at -20 °C long term. Avoid freeze-thaw cycles.

### Specificity:

SEMA3C (E750) polyclonal antibody detects endogenous levels of SEMA3C protein.

### DATA:

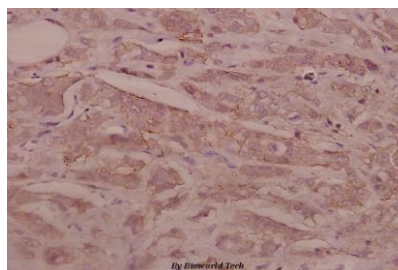


Western blot (WB) analysis of SEMA3C (E750) polyclonal antibody at 1:500 dilution

Lane1:MCF-7 whole cell lysate

Lane2:Raw264.7 whole cell lysate

Lane3:PC12 whole cell lysate



Immunohistochemistry (IHC) analyzes of SEMA3C (E750) pAb in paraffin-embedded human breast carcinoma tissue at 1:100.

### Note:

For research use only, not for use in diagnostic procedure.

### Bioworld Technology, Inc.

Add: 1660 South Highway 100, Suite 500 St. Louis Park, MN 55416, USA.

Email: [info@bioworld.com](mailto:info@bioworld.com)

Tel: 6123263284

Fax: 6122933841

### Bioworld technology, co. Ltd.

Add: No 9, weidi road Qixia District Nanjing, 210046, P. R. China.

Email: [info@biogot.com](mailto:info@biogot.com)

Tel: 0086-025-68037686

Fax: 0086-025-68035151