

Galectin-4 (K83) polyclonal antibody

Catalog: BS2529

Host: Rabbit

Reactivity: Human, Mouse, Rat

Background:

Galectins are a family of soluble β -galactoside-binding animal lectins that modulate cell-to-cell adhesion and cell-to-extracellular matrix (ECM) interactions and play a role in tumor progression, pre-mRNA splicing and apoptosis. One member of this family, Galectin-4, also known as Gal-4, L36 or LGALS4 maps to human chromosome 19q13.13 and encodes a 36-37 kDa protein. The Galectin-4 protein is composed of 323 amino acids and contains two homologous carbohydrate recognition domains (CRD) and all amino acids typically conserved in the galectin family. Expression of Galectin-4 correlates with the malignant potential of human hepatocellular carcinoma (HCC) and is differentially regulated depending on cell-cell contact, serum growth factors, cell growth and cell differentiation status. Galectin-4 expression is detected in epithelial cells of the colon, rectum, intestine, and in HT29 and LS174T cell lines. Galectin-4 is under-expressed in colorectal cancer and is preferentially up-regulated in cells prone to peritoneal dissemination.

Product:

1 mg/ml in Phosphate buffered saline (PBS) with 0.05% sodium azide, approx. pH 7.2.

Molecular Weight:

~ 36 kDa

Swiss-Prot:

P56470

Purification&Purity:

The antibody was affinity-purified from rabbit antiserum by affinity-chromatography using epitope-specific immunogen and the purity is > 95% (by SDS-PAGE).

Applications:

WB: 1:500~1:1000

IHC: 1:50~1:200

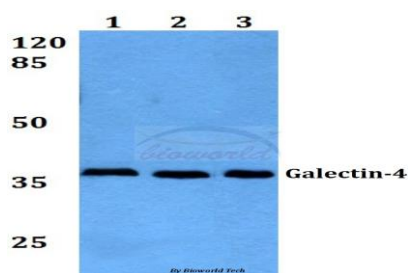
Storage&Stability:

Store at 4 °C short term. Aliquot and store at -20 °C long term. Avoid freeze-thaw cycles.

Specificity:

Galectin-4 (K83) polyclonal antibody detects endogenous levels of Galectin-4 protein.

DATA:

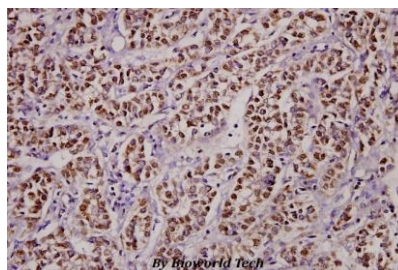


Western blot (WB) analysis of Galectin-4 (K83) polyclonal antibody at 1:500 dilution

Lane1:HEK293T whole cell lysate

Lane2:Raw264.7 whole cell lysate

Lane3:H9C2 whole cell lysate



Immunohistochemistry (IHC) analyzes of Galectin-4 (K83) pAb in paraffin-embedded liver cancer tissue at 1:100.

Note:

For research use only, not for use in diagnostic procedure.

Bioworld Technology, Inc.

Add: 1660 South Highway 100, Suite 500 St. Louis Park, MN 55416, USA.

Email: info@bioworld.com

Tel: 6123263284

Fax: 6122933841

Bioworld technology, co. Ltd.

Add: No 9, weidi road Qixia District Nanjing, 210046, P. R. China.

Email: info@biogot.com

Tel: 0086-025-68037686

Fax: 0086-025-68035151