



## ACE-2 protein

Catalog: NCP0031P

Host: 293

Reactivity: Research and Diagnosis

### BackGround:

Angiotensin-Converting Enzyme 2 (ACE-2) is an integral membrane protein and a zinc metalloprotease of the ACE family, the ACE family includes somatic and germinal ACE. ACE-2 cleaves angiotensins I and II as a carboxypeptidase, ACE-2 converts angiotensin I to angiotensin 1-9, and angiotensin II to angiotensin 1-7. ACE-2 is also able to hydrolyze apelin-13 and dynorphin-13 with high efficiency.

### Mol Mass: 84.63kDa

AP Mol Mass: 103kDa, reducing conditions.

### Purity:

Greater than 95% as determined by reducing SDS-PAGE.

### Product:

Recombinant Human Angiotensin-Converting Enzyme 2 is produced by our 293 expression system and the target gene encoding Gln18-Ser740 is expressed with a 6His tag at the C-terminus.

### Synonym:

Angiotensin-Converting Enzyme 2; ACE-Related Carboxypeptidase; Angiotensin-Converting Enzyme Homolog; ACEH; Metalloprotease MPROT15; ACE2

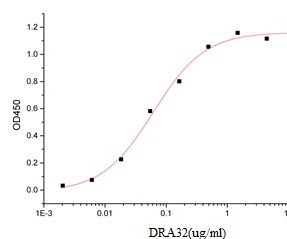
### Storage&Stability:

Store at  $-20^{\circ}\text{C}$ , stable for 6 months after receipt. Please minimize freeze-thaw cycles.

### Specificity:

Less than 0.1 ng/ $\mu\text{g}$  (1 EU/ $\mu\text{g}$ ) as determined by LAL test.

### Data:



Immobilized Human ACE-2-His(Cat#C419) at 10 $\mu\text{g/ml}$  (100  $\mu\text{l/well}$ ) can bind 2019-nCoV S Protein RBD-mFc (Cat#DRA32). The ED<sub>50</sub> of 2019-nCoV S Protein RBD-mFc (Cat#DRA32) is 62 ng/ml.

### Note:

Research and Diagnosis

Source: 293

Tag: C-6His

### Bioworld Technology, Inc.

Add: 1660 South Highway 100, Suite 500 St. Louis Park, MN 55416, USA.

Email: [info@bioworld.com](mailto:info@bioworld.com)

Tel: 6123263284

Fax: 6122933841

### Bioworld technology, co. Ltd.

Add: No 9, weidi road Qixia District Nanjing, 210046, P. R. China.

Email: [info@biogot.com](mailto:info@biogot.com)

Tel: 0086-025-68037686

Fax: 0086-025-68035151