

**PE mouse anti-human CD28 monoclonal antibody**

Catalog: MB8503P

Host: Mouse

Reactivity: Human

**BackGround:**

CD28 is one of the proteins expressed on T cells that provide co-stimulatory signals required for T cell activation and survival. T cell stimulation through CD28 in addition to the T-cell receptor (TCR) can provide a potent signal for the production of various interleukins (IL-6 in particular).

CD28 is the receptor for CD80 (B7.1) and CD86 (B7.2) proteins. When activated by Toll-like receptor ligands, the CD80 expression is upregulated in antigen presenting cells (APCs). The CD86 expression on antigen presenting cells is constitutive (expression is independent of environmental factors). CD28 is the only B7 receptor constitutively expressed on naive T cells. Association of the TCR of a naive T cell with MHC:antigen complex without CD28:B7 interaction results in a T cell that is anergic.

**Product:**

Mouse IgG1, PBS(pH7.2), 0.09% sodium azide.

**Molecular Weight:**

N/A

**Swiss-Prot:**

P10747

**Purification&Purity:**

Protein A affinity purified

**Applications:**

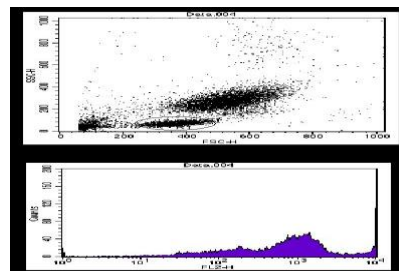
FC: 5ul per test

**Storage&Stability:**

Store at 4 °C . Avoid freeze.

**Specificity:**

This antibody detects Extracellular domain of human CD28.

**DATA:**

Flow cytometry analysis of human monocytes.

**Note:**

For research use only, not for use in diagnostic procedure.

**Bioworld Technology, Inc.**

Add: 1660 South Highway 100, Suite 500 St. Louis Park, MN 55416, USA.

Email: [info@bioworld.com](mailto:info@bioworld.com)

Tel: 6123263284

Fax: 6122933841

**Bioworld technology, co. Ltd.**

Add: No 9, weidi road Qixia District Nanjing, 210046, P. R. China.

Email: [info@biogol.com](mailto:info@biogol.com)

Tel: 0086-025-68037686

Fax: 0086-025-68035151