

PE mouse anti-human CD3 monoclonal antibody

Catalog: MB8501P

Host: Mouse

Reactivity: Human

BackGround:

In immunology, the CD3 (cluster of differentiation 3) T-cell co-receptor helps to activate the cytotoxic T-Cell. It consists of a protein complex and is composed of four distinct chains. In mammals, the complex contains a CD3 γ chain, a CD3 δ chain, and two CD3 ϵ chains. These chains associate with a molecule known as the T-cell receptor (TCR) and the ζ -chain (zeta-chain) to generate an activation signal in T lymphocytes. The TCR, ζ -chain, and CD3 molecules together constitute the TCR complex.

Product:

Mouse IgG1,PBS(pH7.2),0.09% sodium azide.

Molecular Weight:

N/A

Swiss-Prot:

P07766

Purification&Purity:

Protein A affinity purified

Applications:

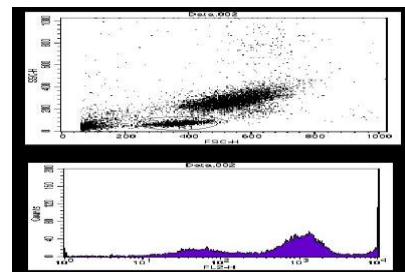
FC:5ul per test

Storage&Stability:

Store at 4 °C . Avoid frozen.

Specificity:

This antibody detects Extracellular domain of human CD3.

DATA:

Flow cytometry analysis of human monocytes.

Note:

For research use only, not for use in diagnostic procedure.

Bioworld Technology, Inc.Add: 1660 South Highway 100, Suite 500 St. Louis Park,
MN 55416,USA.Email: info@bioworld.com

Tel: 6123263284

Fax: 6122933841

Bioworld technology, co. Ltd.Add: No 9, weidi road Qixia District Nanjing, 210046,
P. R. China.Email: info@biogot.com

Tel: 0086-025-68037686

Fax: 0086-025-68035151