

Alpha-crystallin B monoclonal antibody

Catalog: MB66774

Host: Mouse

Reactivity: Human, Mouse, Rat

BackGround:

Crystallins are the major proteins of the vertebrate eye lens, where they maintain the transparency and refractive index of the lens. Crystallins are divided into a, b and g families, and the b- and g-crystallins also compose a superfamily. Crystallins usually contain seven distinct protein regions, including four homologous motifs, a connecting peptide, and N- and C-terminal extensions. a-crystallins consist of three gene products, aA-, aB- and aC-crystallin, which are members of the small heat shock protein family (HSP 20). a-crystallins act as molecular chaperones by holding denatured proteins in large soluble aggregates. However, unlike other molecular chaperones, a-crystallins do not renature these proteins. Expression of aA-crystallin is restricted to the lens and defects of this gene cause the development of autosomal dominant congenital cataracts (ADCC). The human aB-crystallin gene product is expressed in many tissues, including lens, heart and skeletal muscle. Elevated expression of aB-crystallin is associated with many neurological diseases, and a missense mutation in this gene has co-segregated in a family with a Desmin-related myopathy.

Product:

Mouse IgG1 kappa. Liquid in PBS, pH 7.3, 30% glycerol, and 0.01% sodium azide.

Molecular Weight:

~ 23 kDa

Swiss-Prot:

P02511

Purification&Purity:

This antibody is purified through a protein G column.

Applications:

WB (1/500 - 1/1000)

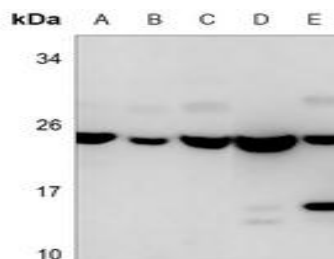
Storage&Stability:

Store at 4 °C short term. Aliquot and store at -20 °C long term. Avoid freeze-thaw cycles.

Specificity:

Recognizes endogenous levels of Alpha-crystallin B protein.

DATA:



Western blot analysis of Alpha-crystallin B expression in U87 MG (A), MCF7 (B), mouse heart (C), skeletal muscle (D), rat skeletal muscle (E) whole cell lysates.

Note:

For research use only, not for use in diagnostic procedure.

Bioworld Technology, Inc.

Add: 1660 South Highway 100, Suite 500 St. Louis Park, MN 55416, USA.

Email: info@bioworld.com

Tel: 6123263284

Fax: 6122933841

Bioworld technology, co. Ltd.

Add: No 9, weidi road Qixia District Nanjing, 210046, P. R. China.

Email: info@biogot.com

Tel: 0086-025-68037686

Fax: 0086-025-68035151