

Metadherin monoclonal antibody

Catalog: MB66636

Host: Mouse

Reactivity: Human

BackGround:

Lyric/AEG-1 (Astrocyte Elevated Gene 1)/MTDH (Metadherin) was identified as a tight junction (TJ) protein based on its localization to TJ proteins in polarized epithelium. Differential subcellular localization and overexpression of Lyric/AEG-1/MTDH has been seen in multiple human cancers. Lyric/AEG-1/MTDH is involved in signaling pathways related to various cellular functions including proliferation and apoptosis/survival, and its alteration in cancer is associated with poor prognosis. In breast cancer, increased Lyric/AEG-1/MTDH may confer increased chemoresistance as well as metastasis. Lyric/AEG-1/MTDH expression is important in signaling and disease progression of hepatocellular carcinoma (HCC) and glioblastoma multiforme (GBM).

Product:

Liquid in PBS containing 50% glycerol, 0.5% BSA and 0.02% sodium azide, pH 7.3.

Molecular Weight:

~ 60 kDa

Swiss-Prot:

Q86UE4

Purification&Purity:

The antibody was purified by immunogen affinity chromatography.

Applications:

WB (1/500 - 1/1000), IHC (1/50 - 1/100), FC (1/50 - 1/100)

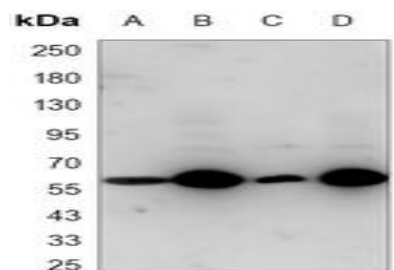
Storage&Stability:

Store at 4 °C short term. Aliquot and store at -20 °C long term. Avoid freeze-thaw cycles.

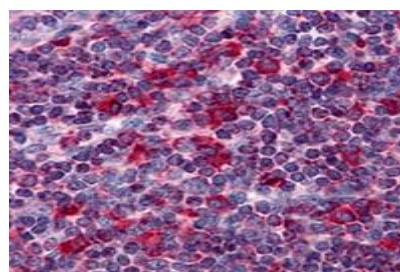
Specificity:

Recognizes endogenous levels of Metadherin protein.

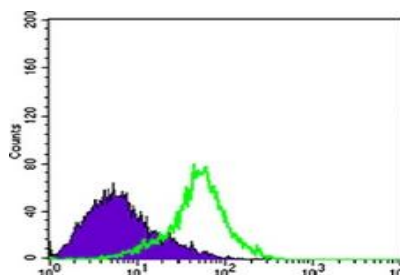
DATA:



Western blot analysis of Metadherin expression in Jurkat (A), A549 (B), MCF7 (C), HeLa (D) whole cell lysates.



Immunohistochemical analysis of Metadherin staining in human liver formalin fixed paraffin embedded tissue section. The section was pre-treated using heat mediated antigen retrieval with sodium citrate buffer (pH 6.71). The section was then incubated with the antibody at room temperature and detected using an HRP conjugated compact polymer system. DAB was used as the chromogen. The section was then counterstained with haematoxylin and mounted with DPX.



Note:

For research use only, not for use in diagnostic procedure.

Bioworld Technology, Inc.

Add: 1660 South Highway 100, Suite 500 St. Louis Park, MN 55416, USA.

Email: info@bioworld.com

Tel: 6123263284

Fax: 6122933841

Bioworld technology, co. Ltd.

Add: No 9, weidi road Qixia District Nanjing, 210046, P. R. China.

Email: info@biogot.com

Tel: 0086-025-68037686

Fax: 0086-025-68035151