

MAGEB2 mouse monoclonal antibody

Catalog: MB4034

Host: Mouse

Reactivity: Human

BackGround:

Cancer/testis antigens (CTAs) are a family of more than 100 proteins whose normal expression is largely restricted to immune privileged germ cells of the testis, ovary, and trophoblast cells of the placenta. Although most normal somatic tissues are void of CTA expression, due to epigenetic silencing of gene expression, their expression is upregulated in a wide variety of human solid and liquid tumors (1,2). As such, CTAs have garnered much attention as attractive targets for a variety of immunotherapy-based approaches to selectively attack tumors (3).

Melanoma-associated antigen-A4 (MAGE-A4) is a cancer testis antigen that belongs to the type I MAGE family of proteins. MAGE-A4 is often overexpressed and mutated in several types of cancer (4-8). Research shows MAGE-A4 promotes aberrant cell growth by preventing p53-dependent cell cycle arrest and apoptosis in normal oral keratinocytes (9). However, MAGE-A4 was also found to interact with the liver oncoprotein gankyrin, suppressing its tumorigenic activity (10). The diverse roles of MAGE-A4 in tumor development may be dependent upon sub-cellular localization (nuclear or cytosolic) and p53 status (6). Due to its upregulated expression in human tumors and high degree of immunogenicity, MAGE-A4 has received significant attention as an immunotherapy target through the use of vaccines and adoptive cell therapy (11-14).

Product:

1mg/ml in PBS with 0.02% sodium azide, 50% glycerol, pH7.2

Molecular Weight:

~ 40 kDa

Swiss-Prot:

O15479

Purification&Purity:

The antibody was affinity-purified from mouse ascites fluids or tissue culture supernatant by affinity-chromatography using epitope-specific immunogen and the purity is > 95% (by SDS-PAGE).

Applications:

WB 1:2000

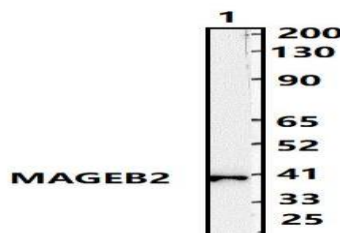
Storage&Stability:

Store at 4 °C short term. Aliquot and store at -20 °C long term. Avoid freeze-thaw cycles.

Isotype:

IgG1

DATA:



Western blot (WB) analysis of MAGEB2 mouse monoclonal antibody at 1:500 dilution

Lane1:THP-1 whole cell lysate(30ug)

Note:

For research use only, not for use in diagnostic procedure.

Bioworld Technology, Inc.

Add: 1660 South Highway 100, Suite 500 St. Louis Park, MN 55416, USA.

Email: info@bioworld.com

Tel: 6123263284

Fax: 6122933841

Bioworld technology, co. Ltd.

Add: No 9, weidi road Qixia District Nanjing, 210046, P. R. China.

Email: info@biogot.com

Tel: 0086-025-68037686

Fax: 0086-025-68035151