

**Thioredoxin monoclonal antibody**

Catalog: MB12324

Host: Rabbit

Reactivity: Human, Mouse, Rat

**BackGround:**

Thioredoxin (Trx) is a redox protein that is found in several species, such as bacteria, plants and mammals, and contains a conserved active site, consisting of Trp-Cys-Gly-Pro-Cys. Participates in many cellular processes including redox signaling, response to oxidative stress, and protein reduction

**Product:**

50mM Tris-Glycine(pH 7.4), 0.15M NaCl, 40% Glycerol, 0.01% Sodium azide and 0.05% BSA

**Molecular Weight:**

Calculated MW: 12 kDa; Observed MW: 12 kDa

**Swiss-Prot:**

P10599

**Purification&Purity:**

Affinity Purified

**Applications:**

WB: 1/1000-1/10000

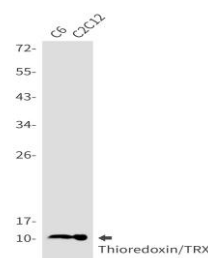
**Storage&Stability:**

Store at 4 °C short term. Aliquot and store at -20 °C long

term. Avoid freeze-thaw cycles.

**Isotype:**

IgG

**DATA:**

Western blot analysis of Thioredoxin/TRX in C6, C2C12 lysates using Thioredoxin antibody.

Western blot analysis of Thioredoxin/TRX in HeLa, A549, HL-60, U2OS, U87-MG lysates using Thioredoxin/TRX antibody.

**Note:**

For research use only, not for use in diagnostic procedure.

**Bioworld Technology, Inc.**

Add: 1660 South Highway 100, Suite 500 St. Louis Park, MN 55416, USA.

Email: [info@bioworld.com](mailto:info@bioworld.com)

Tel: 6123263284

Fax: 6122933841

**Bioworld technology, co. Ltd.**

Add: No 9, weidi road Qixia District Nanjing, 210046, P. R. China.

Email: [info@biogol.com](mailto:info@biogol.com)

Tel: 0086-025-68037686

Fax: 0086-025-68035151