

MHC Class I monoclonal antibody

Catalog: MB12317

Host: Rabbit

Reactivity: Human

BackGround:

Major histocompatibility complex (MHC) molecules form an integral part of the immune response system. They are cell-surface receptors that bind peptides and present them to T lymphocytes. HLA-A, -B and -C encode membrane anchored heavy chains which heterodimerize with a light chain (b-2-Microglobulin) to form MHC-I. Polymorphisms yield hundreds of HLA-A, -B and -C alleles.

Product:

50mM Tris-Glycine(pH 7.4), 0.15M NaCl, 40% Glycerol, 0.01% Sodium azide and 0.05% BSA

Molecular Weight:

Calculated MW: 41 kDa; Observed MW: 41 kDa

Swiss-Prot:

P04439

Purification&Purity:

Affinity Purified

Applications:

WB: 1/500-1/1000 IHC: 1/50-1/100

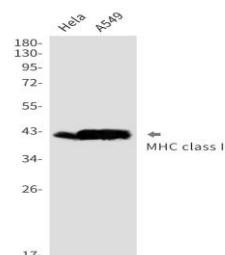
Storage&Stability:

Store at 4 °C short term. Aliquot and store at -20 °C long term. Avoid freeze-thaw cycles.

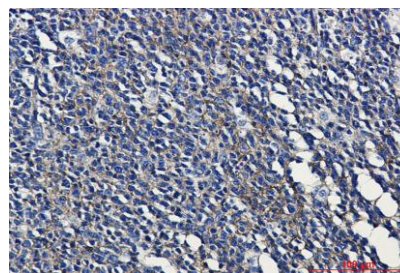
Isotype:

IgG

DATA:



Western blot analysis of MHC class I in HeLa, A549 lysates using MHC Class I antibody.



Immunohistochemistry analysis of paraffin-embedded Human tonsil using MHC class I antibody. High-pressure and temperature Sodium Citrate pH 6.0 was used for antigen retrieval.

Note:

For research use only, not for use in diagnostic procedure.

Bioworld Technology, Inc.

Add: 1660 South Highway 100, Suite 500 St. Louis Park, MN 55416, USA.

Email: info@bioworld.com

Tel: 6123263284

Fax: 6122933841

Bioworld technology, co. Ltd.

Add: No 9, weidi road Qixia District Nanjing, 210046, P. R. China.

Email: info@biogot.com

Tel: 0086-025-68037686

Fax: 0086-025-68035151