

XRCC1 monoclonal antibody

Catalog: MB12307

Host: Rabbit

Reactivity: Human, Rat

BackGround:

XRCC1 acts as a scaffold protein to coordinate DNA abasic site repair through interaction with several other repair proteins. At least eight XRCC1 protein partners have been identified, including the polynucleotide kinase PNK, DNA ligase III, poly (ADP-ribose) polymerase, and PCNA.

Product:

50mM Tris-Glycine(pH 7.4), 0.15M NaCl, 40% Glycerol, 0.01% Sodium azide and 0.05% BSA

Molecular Weight:

Calculated MW: 69 kDa; Observed MW: 82 kDa

Swiss-Prot:

P18887

Purification&Purity:

Affinity Purified

Applications:

WB: 1/500-1/1000 IF: 1/50-1/200

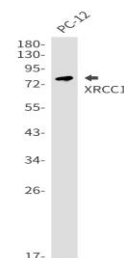
Storage&Stability:

Store at 4 °C short term. Aliquot and store at -20 °C long term. Avoid freeze-thaw cycles.

Isotype:

IgG

DATA:



Western blot analysis of XRCC1 in PC-12 lysates using XRCC1 antibody.

Western blot analysis of XRCC1 in A549, MCF-7, 293T lysates using XRCC1 antibody.

Immunocytochemistry analysis of XRCC1 in hela using XRCC1 antibody, and DAPI

Note:

For research use only, not for use in diagnostic procedure.

Bioworld Technology, Inc.

Add: 1660 South Highway 100, Suite 500 St. Louis Park, MN 55416, USA.

Email: info@bioworld.com

Tel: 6123263284

Fax: 6122933841

Bioworld technology, co. Ltd.

Add: No 9, weidi road Qixia District Nanjing, 210046, P. R. China.

Email: info@biogol.com

Tel: 0086-025-68037686

Fax: 0086-025-68035151