

SUMO Conjugating Enzyme UBC9 monoclonal antibody

Catalog: MB12293

Host: Rabbit

Reactivity: Human, Mouse, Rat

BackGround:

The process of SUMO-1 conjugation is similar to that seen with ubiquitin and other forms of post-translational protein modification. Like ubiquitin, SUMO-1 is conjugated to its target protein by the coordinated action of ubiquitin conjugation enzymes E1, E2 and E3. Ubc9 (or ube2M) is a highly conserved, 158 amino acid protein that acts as a SUMO-1 conjugating enzyme. Ubc9 binds to target proteins through their SUMO-1-CS (consensus sequence) domains and interacts with SUMO via the structurally conserved amino-terminal domain.

Product:

50mM Tris-Glycine(pH 7.4), 0.15M NaCl, 40% Glycerol, 0.01% Sodium azide and 0.05% BSA

Molecular Weight:

Calculated MW: 18 kDa; Observed MW: 18 kDa

Swiss-Prot:

P63279

Purification&Purity:

Affinity Purified

Applications:

WB: 1/500-1/1000 IHC: 1/50-1/100 IF: 1/50-1/200
IP: 1/20

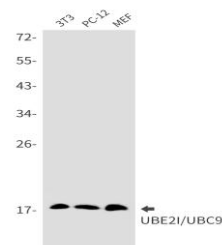
Storage&Stability:

Store at 4 °C short term. Aliquot and store at -20 °C long term. Avoid freeze-thaw cycles.

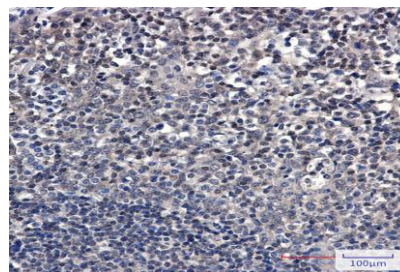
Isotype:

IgG

DATA:



Immunocytochemistry analysis of SUMO Conjugating Enzyme UBC9 in Hela using SUMO Conjugating Enzyme UBC9 antibody, and DAPI.



Western blot analysis of UBE2I/UBC9 in 3T3, PC-12, MEF lysates using UBE2I/UBC9 antibody.

Western blot analysis of UBE2I/UBC9 in Hela, A549, HL-60 lysates using UBE2I/UBC9 antibody

Immunohistochemistry analysis of paraffin-embedded Human tonsil using UBE2I/UBC9 antibody. High-pressure and temperature Sodium Citrate pH 6.0 was used for antigen retrieval.

Note:

For research use only, not for use in diagnostic procedure.

Bioworld Technology, Inc.

Add: 1660 South Highway 100, Suite 500 St. Louis Park, MN 55416, USA.

Email: info@bioworld.com

Tel: 6123263284

Fax: 6122933841

Bioworld technology, co. Ltd.

Add: No 9, weidi road Qixia District Nanjing, 210046, P. R. China.

Email: info@biogot.com

Tel: 0086-025-68037686

Fax: 0086-025-68035151