

TATA Box Binding Protein monoclonal antibody

Catalog: MB12269

Host: Rabbit

Reactivity: Human, Mouse

BackGround:

As one of the few proteins in the preinitiation complex that binds DNA in a sequence-specific manner, it helps position RNA polymerase II over the transcription start site of the gene. However, it is estimated that only 10-20% of human promoters have TATA boxes. Therefore, TBP is probably not the only protein involved in positioning RNA polymerase II. This protein is not suitable for samples where the nuclear envelope has been removed.

Product:

50mM Tris-Glycine(pH 7.4), 0.15M NaCl, 40% Glycerol, 0.01% Sodium azide and 0.05% BSA

Molecular Weight:

Calculated MW: 38 kDa; Observed MW: 38 kDa

Swiss-Prot:

P20226

Purification&Purity:

Affinity Purified

Applications:

WB: 1/500-1/1000 IHC: 1/50-1/100 IF: 1/50-1/200
IP: 1/20

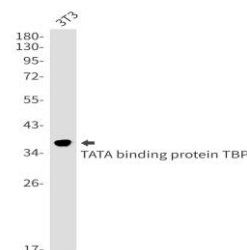
Storage&Stability:

Store at 4 °C short term. Aliquot and store at -20 °C long term. Avoid freeze-thaw cycles.

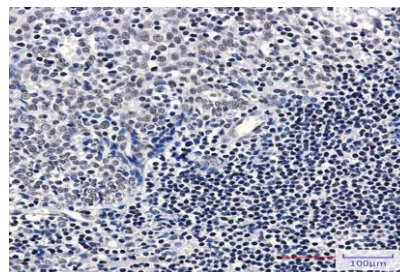
Isotype:

IgG

DATA:



Western blot analysis of TATA binding protein TBP in 3T3 lysates using TATA Box Binding Protein antibody.



Western blot analysis of TATA binding protein TBP in HeLa, A549, HL-60, U2OS lysates using TATA binding protein TBP antibody.

Immunohistochemistry analysis of paraffin-embedded Human tonsil using TATA binding protein TBP antibody. High-pressure and temperature Sodium Citrate pH 6.0 was used for antigen retrieval.

Immunocytochemistry analysis of TATA binding protein TBP in HeLa using TATA binding protein TBP antibody, and DAPI.

Note:

For research use only, not for use in diagnostic procedure.

Bioworld Technology, Inc.

Add: 1660 South Highway 100, Suite 500 St. Louis Park, MN 55416, USA.

Email: info@bioworld.com

Tel: 6123263284

Fax: 6122933841

Bioworld technology, co. Ltd.

Add: No 9, weidi road Qixia District Nanjing, 210046, P. R. China.

Email: info@biogot.com

Tel: 0086-025-68037686

Fax: 0086-025-68035151