

SV40 T Antigen monoclonal antibody

Catalog: MB12265

Host: Rabbit

Reactivity: All

BackGround:

Isoform large T antigen is a key early protein essential for both driving viral replication and inducing cellular transformation. Plays a role in viral genome replication by driving entry of quiescent cells into the cell cycle and by autoregulating the synthesis of viral early mRNA. Displays highly oncogenic activities by corrupting the host cellular checkpoint mechanisms that guard cell division and the transcription, replication, and repair of DNA.

Product:

50mM Tris-Glycine(pH 7.4), 0.15M NaCl, 40% Glycerol, 0.01% Sodium azide and 0.05% BSA

Molecular Weight:

Calculated MW: 82 kDa; Observed MW: 90 kDa

Swiss-Prot:

P03070

Purification&Purity:

Affinity Purified

Applications:

WB: 1/500-1/1000 IF: 1/50-1/200 IP: 1/20

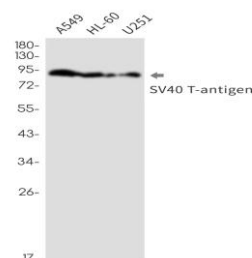
Storage&Stability:

Store at 4 °C short term. Aliquot and store at -20 °C long term. Avoid freeze-thaw cycles.

Isotype:

IgG

DATA:



Western blot analysis of SV40 T antigen in A549, HL-60, U251 lysates using SV40 T Antigen antibody.

Immunocytochemistry analysis of SV40 T antigen in hela using SV40 T antigen antibody, and DAPI

Note:

For research use only, not for use in diagnostic procedure.

Bioworld Technology, Inc.

Add: 1660 South Highway 100, Suite 500 St. Louis Park, MN 55416, USA.

Email: info@bioworld.com

Tel: 6123263284

Fax: 6122933841

Bioworld technology, co. Ltd.

Add: No 9, weidi road Qixia District Nanjing, 210046, P. R. China.

Email: info@biogol.com

Tel: 0086-025-68037686

Fax: 0086-025-68035151