

LGI1 monoclonal antibody

Catalog: MB12100

Host: Rabbit

Reactivity: Human, Mouse, Rat

BackGround:

Regulates voltage-gated potassium channels assembled from KCNA1, KCNA4 and KCNAB1. It slows down channel inactivation by precluding channel closure mediated by the KCNAB1 subunit. Ligand for ADAM22 that positively regulates synaptic transmission mediated by AMPA-type glutamate receptors (By similarity).

Product:

50mM Tris-Glycine (pH 7.4), 0.15M NaCl, 40% Glycerol, 0.01% Sodium azide and 0.05% BSA

Molecular Weight:

Calculated MW: 64 kDa; Observed MW: 64 kDa

Swiss-Prot:

O95970

Purification&Purity:

Affinity Purified

Applications:

WB: 1/500-1/1000 IP: 1/20

Storage&Stability:

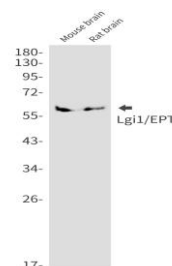
Store at 4 °C short term. Aliquot and store at -20 °C long

term. Avoid freeze-thaw cycles.

Isotype:

IgG

DATA:



Western blot analysis of Lgi1/EPT in mouse brain, rat brain lysates using LGI1 antibody.

Western blot analysis of Lgi1/EPT in Hela, A549 lysates using Lgi1/EPT antibody.

Note:

For research use only, not for use in diagnostic procedure.

Bioworld Technology, Inc.

Add: 1660 South Highway 100, Suite 500 St. Louis Park, MN 55416, USA.

Email: info@bioworld.com

Tel: 6123263284

Fax: 6122933841

Bioworld technology, co. Ltd.

Add: No 9, weidi road Qixia District Nanjing, 210046, P. R. China.

Email: info@biogol.com

Tel: 0086-025-68037686

Fax: 0086-025-68035151