

IMPDH2 monoclonal antibody

Catalog: MB12083

Host: Rabbit

Reactivity: Human, Mouse, Rat

BackGround:

Rate limiting enzyme in the de novo synthesis of guanine nucleotides and therefore is involved in the regulation of cell growth. It may also have a role in the development of malignancy and the growth progression of some tumors.

Product:

50mM Tris-Glycine(pH 7.4), 0.15M NaCl, 40% Glycerol, 0.01% Sodium azide and 0.05% BSA

Molecular Weight:

Calculated MW: 56 kDa; Observed MW: 56 kDa

Swiss-Prot:

P12268

Purification&Purity:

Affinity Purified

Applications:

WB: 1/500-1/1000 IHC: 1/50-1/100 IF: 1/50-1/200
IP: 1/20

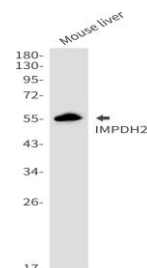
Storage&Stability:

Store at 4 °C short term. Aliquot and store at -20 °C long term. Avoid freeze-thaw cycles.

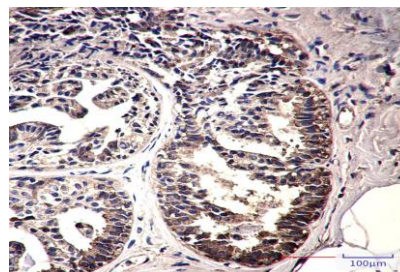
Isotype:

IgG

DATA:



Immunocytochemistry analysis of IMPDH2 in HeLa using IMPDH2 antibody, and DAPI.



Western blot analysis of IMPDH2 in 3T3, mouse liver lysates using IMPDH2 antibody.

Western blot analysis of IMPDH2 in HeLa, A549, HL-60, U2OS, C6 lysates using IMPDH2 antibody

Immunohistochemistry analysis of paraffin-embedded human breast cancer using IMPDH2 antibody. High-pressure and temperature Sodium Citrate pH 6.0 was used for antigen retrieval.

Note:

For research use only, not for use in diagnostic procedure.

Bioworld Technology, Inc.

Add: 1660 South Highway 100, Suite 500 St. Louis Park, MN 55416, USA.

Email: info@bioworld.com

Tel: 6123263284

Fax: 6122933841

Bioworld technology, co. Ltd.

Add: No 9, weidi road Qixia District Nanjing, 210046, P. R. China.

Email: info@biogot.com

Tel: 0086-025-68037686

Fax: 0086-025-68035151