

Elongation factor 2 monoclonal antibody

Catalog: MB12008

Host: Rabbit

Reactivity: Human, Mouse, Rat

BackGround:

Catalyzes the GTP-dependent ribosomal translocation step during translation elongation. During this step, the ribosome changes from the pre-translocational (PRE) to the post-translocational (POST) state as the newly formed A-site-bound peptidyl-tRNA and P-site-bound deacylated tRNA move to the P and E sites, respectively.

Product:

50mM Tris-Glycine (pH 7.4), 0.15M NaCl, 40% Glycerol, 0.01% Sodium azide and 0.05% BSA

Molecular Weight:

Calculated MW: 95 kDa; Observed MW: 95 kDa

Swiss-Prot:

P13639

Purification&Purity:

Affinity Purified

Applications:

WB: 1/500-1/1000 IHC: 1/50-1/100 IF: 1/50-1/200
IP: 1/20

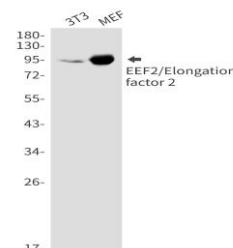
Storage&Stability:

Store at 4 °C short term. Aliquot and store at -20 °C long term. Avoid freeze-thaw cycles.

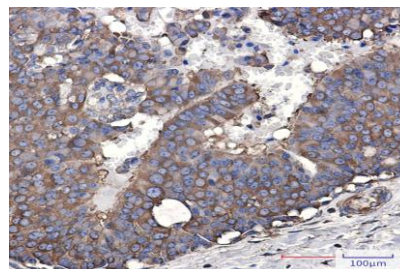
Isotype:

IgG

DATA:



Immunocytochemistry analysis of EEF2/Elongation factor 2 in HeLa using EEF2/Elongation factor 2 antibody, and DAPI.



Western blot analysis of EEF2/Elongation factor 2 in 3T3, MEF lysates using EEF2/Elongation factor 2 antibody.

Western blot analysis of EEF2/Elongation factor 2 in A549, U2OS, C6 lysates using EEF2/Elongation factor 2 antibody

Immunohistochemistry analysis of paraffin-embedded Human breast cancer using EEF2/Elongation factor 2 antibody. High-pressure and temperature Sodium Citrate pH 6.0 was used for antigen retrieval.

Note:

For research use only, not for use in diagnostic procedure.

Bioworld Technology, Inc.

Add: 1660 South Highway 100, Suite 500 St. Louis Park, MN 55416, USA.

Email: info@bioworld.com

Tel: 6123263284

Fax: 6122933841

Bioworld technology, co. Ltd.

Add: No 9, weidi road Qixia District Nanjing, 210046, P. R. China.

Email: info@biogol.com

Tel: 0086-025-68037686

Fax: 0086-025-68035151