

BMI1 monoclonal antibody

Catalog: MB11938

Host: Rabbit

Reactivity: Human, Mouse, Rat

BackGround:

The polycomb group (PcG) of proteins contributes to the maintenance of cell identity, stem cell self-renewal, cell cycle regulation, and oncogenesis by maintaining the silenced state of genes that promote cell lineage specification, cell death, and cell-cycle arrest. PcG proteins exist in two complexes that cooperate to maintain long-term gene silencing through epigenetic chromatin modifications. The first complex, EED-EZH2, is recruited to genes by DNA-binding transcription factors and methylates histone H3 on Lys27.

Product:

50mM Tris-Glycine(pH 7.4), 0.15M NaCl, 40% Glycerol, 0.01% Sodium azide and 0.05% BSA

Molecular Weight:

Calculated MW: 37 kDa; Observed MW: 43 kDa

Swiss-Prot:

P35226

Purification&Purity:

Affinity Purified

Applications:

WB: 1/500-1/1000 IF: 1/50-1/200 IP: 1/20

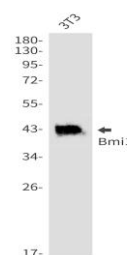
Storage&Stability:

Store at 4 °C short term. Aliquot and store at -20 °C long term. Avoid freeze-thaw cycles.

Isotype:

IgG

DATA:



Immunocytochemistry analysis of BMI1 in Hela using BMI1 antibody, and DAPI.

Western blot analysis of Bmi1 in 3T3 lysates using Bmi1 antibody.

Western blot analysis of Bmi1 in C6, rat Brain, Ramos lysates using Bmi1 antibody

Note:

For research use only, not for use in diagnostic procedure.

Bioworld Technology, Inc.

Add: 1660 South Highway 100, Suite 500 St. Louis Park, MN 55416, USA.

Email: info@bioworld.com

Tel: 6123263284

Fax: 6122933841

Bioworld technology, co. Ltd.

Add: No 9, weidi road Qixia District Nanjing, 210046, P. R. China.

Email: info@biogol.com

Tel: 0086-025-68037686

Fax: 0086-025-68035151