

14-3-3 alpha/beta monoclonal antibody

Catalog: MB11899

Host: Rabbit

Reactivity: Human, Mouse, Rat

BackGround:

Adapter protein implicated in the regulation of a large spectrum of both general and specialized signaling pathways. Binds to a large number of partners, usually by recognition of a phosphoserine or phosphothreonine motif. Binding generally results in the modulation of the activity of the binding partner. Negative regulator of osteogenesis.

Product:

50mM Tris-Glycine(pH 7.4), 0.15M NaCl, 40% Glycerol, 0.01% Sodium azide and 0.05% BSA

Molecular Weight:

Calculated MW: 28 kDa; Observed MW: 28 kDa

Swiss-Prot:

P31946

Purification&Purity:

Affinity Purified

Applications:

WB: 1/500-1/1000 IHC: 1/50-1/100 IP: 1/20

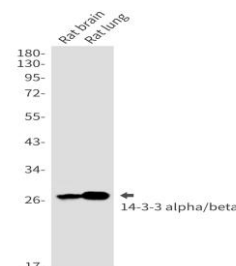
Storage&Stability:

Store at 4 °C short term. Aliquot and store at -20 °C long term. Avoid freeze-thaw cycles.

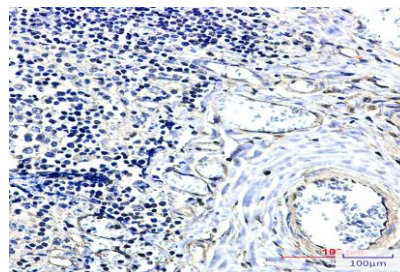
Isotype:

IgG

DATA:



Western blot analysis of 14-3-3 alpha/beta in rat brain, rat lung lysates using 14-3-3 alpha/beta antibody.



Western blot analysis of 14-3-3 alpha/beta in HeLa, A549, MCF-7, U251, C2C12 lysates using 14-3-3 alpha/beta antibody.

Immunohistochemistry analysis of paraffin-embedded Human tonsil using 14-3-3 alpha/beta antibody. High-pressure and temperature Sodium Citrate pH 6.0 was used for antigen retrieval.

Note:

For research use only, not for use in diagnostic procedure.

Bioworld Technology, Inc.

Add: 1660 South Highway 100, Suite 500 St. Louis Park, MN 55416, USA.

Email: info@bioworld.com

Tel: 6123263284

Fax: 6122933841

Bioworld technology, co. Ltd.

Add: No 9, weidi road Qixia District Nanjing, 210046, P. R. China.

Email: info@biogot.com

Tel: 0086-025-68037686

Fax: 0086-025-68035151