

Phospho-Smad2 (Ser250) monoclonal antibody

Catalog: MB11895

Host: Rabbit

Reactivity: Human, Mouse, Rat, Hamster

BackGround:

The protein encoded by this gene belongs to the SMAD, a family of proteins similar to the gene products of the Drosophila gene 'mothers against decapentaplegic' (Mad) and the C. elegans gene Sma. SMAD proteins are signal transducers and transcriptional modulators that mediate multiple signaling pathways.

Product:

50mM Tris-Glycine (pH 7.4), 0.15M NaCl, 40% Glycerol, 0.01% Sodium azide and 0.05% BSA

Molecular Weight:

Calculated MW: 52 kDa; Observed MW: 58,62 kDa

Swiss-Prot:

Q15796

Purification&Purity:

Affinity Purified

Applications:

WB: 1/500-1/1000

Storage&Stability:

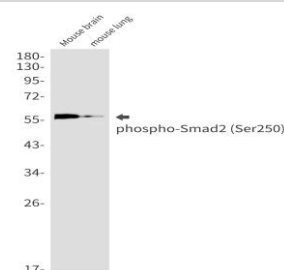
Store at 4 °C short term. Aliquot and store at -20 °C long

term. Avoid freeze-thaw cycles.

Isotype:

IgG

DATA:



Western blot analysis of Phospho-Smad2 in mouse brain, mouse lung lysates using Phospho-Smad2 antibody.

Western blot analysis of Smad2 in HeLa, CHO-K1, C6 lysates using Smad2 antibody.

Note:

For research use only, not for use in diagnostic procedure.

Bioworld Technology, Inc.

Add: 1660 South Highway 100, Suite 500 St. Louis Park, MN 55416, USA.

Email: info@bioworld.com

Tel: 6123263284

Fax: 6122933841

Bioworld technology, co. Ltd.

Add: No 9, weidi road Qixia District Nanjing, 210046, P. R. China.

Email: info@biogot.com

Tel: 0086-025-68037686

Fax: 0086-025-68035151