

## Phospho-delta 1 Catenin (Thr916) monoclonal antibody

Catalog: MB11855

Host: Rabbit

Reactivity: Human, Mouse

### BackGround:

Catenin  $\delta$ -1 (p120 catenin) has an amino-terminal coiled-coil domain followed by a regulatory domain containing multiple phosphorylation sites and a central Armadillo repeat domain of ten linked 42-amino acid repeats. The carboxy-terminal tail has no known function. Catenin  $\delta$ -1 fulfills critical roles in the regulation of cell-cell adhesion as it regulates E-cadherin turnover at the cell surface to determine the level of E-cadherin available for cell-cell adhesion.

### Product:

50mM Tris-Glycine(pH 7.4), 0.15M NaCl, 40% Glycerol, 0.01% Sodium azide and 0.05% BSA

### Molecular Weight:

Calculated MW: 108 kDa; Observed MW: 100 kDa

### Swiss-Prot:

O60716

### Purification&Purity:

Affinity Purified

### Applications:

WB: 1/500-1/1000 IHC: 1/50-1/100 IF: 1/50-1/200

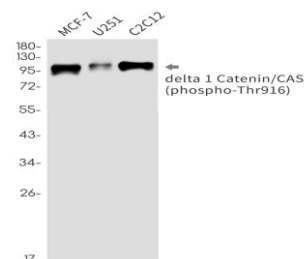
### Storage&Stability:

Store at 4 °C short term. Aliquot and store at -20 °C long term. Avoid freeze-thaw cycles.

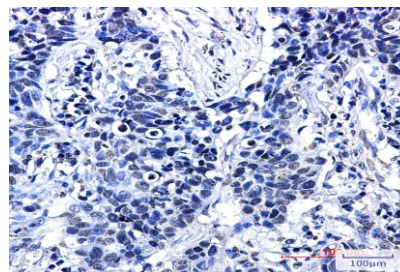
### Isotype:

IgG

### DATA:



Western blot analysis of Phospho-delta 1 Catenin/CAS in MCF-7, U251, C2C12 lysates using Phospho-delta 1 Catenin antibody.



Immunocytochemistry analysis of delta 1 Catenin/CAS in HeLa cells using delta 1 Catenin/CAS antibody, and DAPI.

Immunohistochemistry analysis of paraffin-embedded Human lung cancer using Phospho-delta 1 Catenin/CAS antibody. High-pressure and temperature Sodium Citrate pH 6.0 was used for antigen retrieval.

### Note:

For research use only, not for use in diagnostic procedure.

### Bioworld Technology, Inc.

Add: 1660 South Highway 100, Suite 500 St. Louis Park,

MN 55416, USA.

Email: [info@bioworld.com](mailto:info@bioworld.com)

Tel: 6123263284

Fax: 6122933841

### Bioworld technology, co. Ltd.

Add: No 9, weidi road Qixia District Nanjing, 210046, P. R. China.

Email: [info@biogot.com](mailto:info@biogot.com)

Tel: 0086-025-68037686

Fax: 0086-025-68035151