

## Phospho-CDK1/2 (Thr14) monoclonal antibody

Catalog: MB11851

Host: Rabbit

Reactivity: Human

### BackGround:

Cdk2 is a member of the Ser/Thr protein kinase family. It is highly similar to the gene products of *S. cerevisiae* cdc28, and *S. pombe* cdc2. Cdk2 is closely related to cdc2 (cdk1) which has proved useful as a marker of proliferation. Cdk1 and Cdk2 are a catalytic subunits of the highly conserved protein kinase complex known as M-phase promoting factor (MPF), which is essential for G1/S and G2/M phase transitions of eukaryotic cell cycle.

### Product:

50mM Tris-Glycine(pH 7.4), 0.15M NaCl, 40% Glycerol, 0.01% Sodium azide and 0.05% BSA

### Molecular Weight:

Calculated MW: 34 kDa; Observed MW: 34 kDa

### Swiss-Prot:

P06493/P24941

### Purification&Purity:

Affinity Purified

### Applications:

WB: 1/500-1/1000 IHC: 1/50-1/100 IP: 1/20

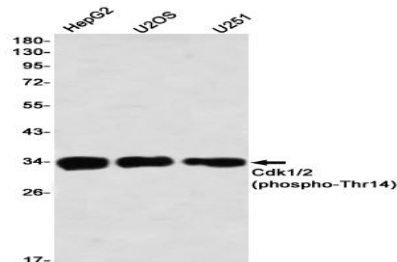
### Storage&Stability:

Store at 4 °C short term. Aliquot and store at -20 °C long term. Avoid freeze-thaw cycles.

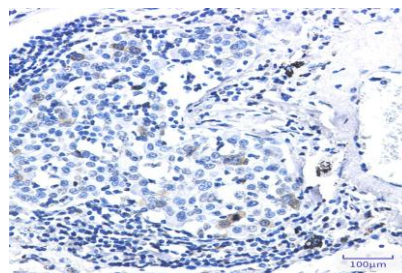
### Isotype:

IgG

### DATA:



Western blot analysis of Cdk1/2 in HepG2, U2OS, U251 lysates using Phospho-CDK1/2 antibody.



Immunohistochemistry analysis of paraffin-embedded Human lung cancer using Cdk1/2 antibody. High-pressure and temperature Sodium Citrate pH 6.0 was used for antigen retrieval.

### Note:

For research use only, not for use in diagnostic procedure.

### Bioworld Technology, Inc.

Add: 1660 South Highway 100, Suite 500 St. Louis Park, MN 55416, USA.

Email: [info@bioworld.com](mailto:info@bioworld.com)

Tel: 6123263284

Fax: 6122933841

### Bioworld technology, co. Ltd.

Add: No 9, weidi road Qixia District Nanjing, 210046, P. R. China.

Email: [info@biogot.com](mailto:info@biogot.com)

Tel: 0086-025-68037686

Fax: 0086-025-68035151