

RNA Polymerase II Subunit B1 monoclonal antibody

Catalog: MB11834

Host: Rabbit

Reactivity: Human

BackGround:

During transcription elongation, Pol II moves on the template as the transcript elongates. Elongation is influenced by the phosphorylation status of the C-terminal domain (CTD) of Pol II largest subunit (RPB1), which serves as a platform for assembly of factors that regulate transcription initiation, elongation, termination and mRNA processing.

Product:

50mM Tris-Glycine(pH 7.4), 0.15M NaCl, 40% Glycerol, 0.01% Sodium azide and 0.05% BSA

Molecular Weight:

Calculated MW: 217 kDa; Observed MW: 250 kDa

Swiss-Prot:

P24928

Purification&Purity:

Affinity Purified

Applications:

WB: 1/500-1/1000 IHC: 1/50-1/100 IF: 1/50-1/200
IP: 1/20

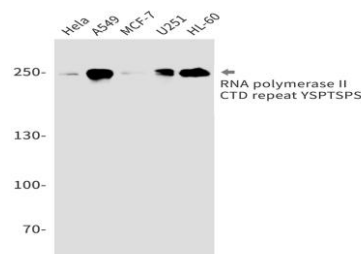
Storage&Stability:

Store at 4 °C short term. Aliquot and store at -20 °C long term. Avoid freeze-thaw cycles.

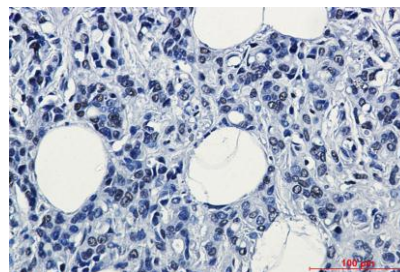
Isotype:

IgG

DATA:



Immunocytochemistry analysis of RNA Polymerase II Subunit B1 in CEM using RNA Polymerase II Subunit B1 antibody, and DAPI.



Western blot analysis of RNA polymerase II CTD repeat YSPTSPS in Hela, A549, MCF-7, U251, HL-60 lysates using RNA polymerase II CTD repeat YSPTSPS antibody.

Immunohistochemistry analysis of paraffin-embedded Human breast cancer tissue using RNA polymerase II CTD repeat YSPTSPS antibody. High-pressure and temperature Sodium Citrate pH 6.0 was used for antigen retrieval.

Note:

For research use only, not for use in diagnostic procedure.

Bioworld Technology, Inc.

Add: 1660 South Highway 100, Suite 500 St. Louis Park, MN 55416, USA.

Email: info@bioworld.com

Tel: 6123263284

Fax: 6122933841

Bioworld technology, co. Ltd.

Add: No 9, weidi road Qixia District Nanjing, 210046, P. R. China.

Email: info@biogol.com

Tel: 0086-025-68037686

Fax: 0086-025-68035151