

## PAK1 monoclonal antibody

Catalog: MB11813

Host: Rabbit

Reactivity: Human, Mouse, Rat, Hamster

### BackGround:

The activated kinase acts on a variety of targets. Likely to be the GTPase effector that links the Rho-related GTPases to the JNK MAP kinase pathway. Activated by CDC42 and RAC1. Involved in dissolution of stress fibers and reorganization of focal complexes. Involved in regulation of microtubule biogenesis through phosphorylation of TBCB.

### Product:

50mM Tris-Glycine(pH 7.4), 0.15M NaCl, 40% Glycerol, 0.01% Sodium azide and 0.05% BSA

### Molecular Weight:

Calculated MW: 61 kDa; Observed MW: 61 kDa

### Swiss-Prot:

Q13153

### Purification&Purity:

Affinity Purified

### Applications:

WB: 1/500-1/1000 IHC: 1/50-1/100 IF: 1/50-1/200  
IP: 1/20

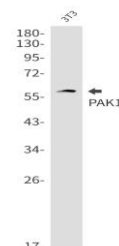
### Storage&Stability:

Store at 4 °C short term. Aliquot and store at -20 °C long term. Avoid freeze-thaw cycles.

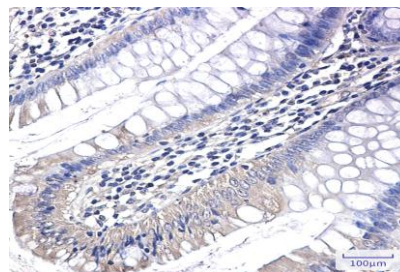
### Isotype:

IgG

### DATA:



Immunocytochemistry analysis of PAK1 in 3T3 using PAK1 antibody, and DAPI.



Western blot analysis of PAK1 in 3T3 lysates using PAK1 antibody.

Western blot analysis of PAK1 in Hela, CHO-K1, C6, Jurkat lysates using PAK1 antibody

Immunohistochemistry analysis of paraffin-embedded Human colon cancer using PAK1 antibody. High-pressure and temperature Sodium Citrate pH 6.0 was used for antigen retrieval.

### Note:

For research use only, not for use in diagnostic procedure.

### Bioworld Technology, Inc.

Add: 1660 South Highway 100, Suite 500 St. Louis Park, MN 55416, USA.

Email: [info@bioworld.com](mailto:info@bioworld.com)

Tel: 6123263284

Fax: 6122933841

### Bioworld technology, co. Ltd.

Add: No 9, weidi road Qixia District Nanjing, 210046, P. R. China.

Email: [info@biogot.com](mailto:info@biogot.com)

Tel: 0086-025-68037686

Fax: 0086-025-68035151