

# Pulmonary Surfactant Associated Protein D monoclonal antibody

Catalog: MB11654

Host: Rabbit

Reactivity: Rat

## BackGround:

Contributes to the lung's defense against inhaled micro-organisms, organic antigens and toxins. Interacts with compounds such as bacterial lipopolysaccharides, oligosaccharides and fatty acids and modulates leukocyte action in immune response. May participate in the extracellular reorganization or turnover of pulmonary surfactant. Binds strongly maltose residues and to a lesser extent other alpha-glucosyl moieties. Miscellaneous Pulmonary surfactant consists of 90% lipid and 10% protein. There are 4 surfactant-associated proteins: 2 collagenous, carbohydrate-binding glycoproteins (SP-A and SP-D) and 2 small hydrophobic proteins (SP-B and SP-C).

## Product:

50mM Tris-Glycine (pH 7.4), 0.15M NaCl, 40% Glycerol, 0.01% Sodium azide and 0.05% BSA

## Molecular Weight:

Calculated MW: 38 kDa; Observed MW: 43 kDa

## Swiss-Prot:

P50404

## Purification&Purity:

Affinity Purified

## Applications:

WB: 1/500-1/1000 IHC: 1/50-1/100

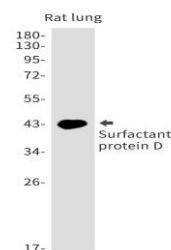
## Storage&Stability:

Store at 4 °C short term. Aliquot and store at -20 °C long term. Avoid freeze-thaw cycles.

## Isotype:

IgG

## DATA:



Western blot analysis of Surfactant protein D in rat lung lysates using Pulmonary Surfactant Associated Protein D antibody.

## Note:

For research use only, not for use in diagnostic procedure.

## Bioworld Technology, Inc.

Add: 1660 South Highway 100, Suite 500 St. Louis Park, MN 55416, USA.

Email: [info@bioworld.com](mailto:info@bioworld.com)

Tel: 6123263284

Fax: 6122933841

## Bioworld technology, co. Ltd.

Add: No 9, weidi road Qixia District Nanjing, 210046, P. R. China.

Email: [info@biogot.com](mailto:info@biogot.com)

Tel: 0086-025-68037686

Fax: 0086-025-68035151