

STAT1 monoclonal antibody

Catalog: MB11637

Host: Rabbit

Reactivity: Human

BackGround:

The protein encoded by this gene is a member of the STAT protein family. In response to cytokines and growth factors, STAT family members are phosphorylated by the receptor associated kinases, and then form homo- or heterodimers that translocate to the cell nucleus where they act as transcription activators.

Product:

50mM Tris-Glycine(pH 7.4), 0.15M NaCl, 40% Glycerol, 0.01% Sodium azide and 0.05% BSA

Molecular Weight:

Calculated MW: 87 kDa; Observed MW: 87 kDa

Swiss-Prot:

P42224

Purification&Purity:

Affinity Purified

Applications:

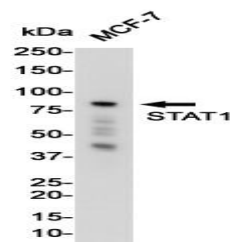
WB: 1/500-1/1000 IF: 1/50-1/200 IP: 1/20

Storage&Stability:

Store at 4 °C short term. Aliquot and store at -20 °C long term. Avoid freeze-thaw cycles.

Isotype:

IgG

DATA:

Western blot analysis of STAT1 in MCF-7 lysates using STAT1 anti-body.

Western blot analysis of STAT1 in MCF-7, HepG2, U2OS, U251MG, K562 lysates using STAT1 antibody.

Immunocytochemistry analysis of STAT1 in Hela using STAT1 anti-body, and DAPI

Note:

For research use only, not for use in diagnostic procedure.

Bioworld Technology, Inc.

Add: 1660 South Highway 100, Suite 500 St. Louis Park, MN 55416, USA.

Email: info@bioworld.com

Tel: 6123263284

Fax: 6122933841

Bioworld technology, co. Ltd.

Add: No 9, weidi road Qixia District Nanjing, 210046, P. R. China.

Email: info@biogol.com

Tel: 0086-025-68037686

Fax: 0086-025-68035151