

## Phospho-STAT1 (Ser727) monoclonal antibody

Catalog: MB11635

Host: Rabbit

Reactivity: Human, Mouse, Rat

### BackGround:

The protein encoded by this gene is a member of the STAT protein family. In response to cytokines and growth factors, STAT family members are phosphorylated by the receptor associated kinases, and then form homo- or heterodimers that translocate to the cell nucleus where they act as transcription activators.

### Product:

50mM Tris-Glycine (pH 7.4), 0.15M NaCl, 40% Glycerol, 0.01% Sodium azide and 0.05% BSA

### Molecular Weight:

Calculated MW: 87 kDa; Observed MW: 87 kDa

### Swiss-Prot:

P42224

### Purification&Purity:

Affinity Purified

### Applications:

WB: 1/500-1/1000 IHC: 1/50-1/100

### Storage&Stability:

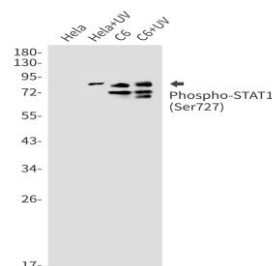
Store at 4 °C short term. Aliquot and store at -20 °C long

term. Avoid freeze-thaw cycles.

### Isotype:

IgG

### DATA:



Western blot analysis of Phospho-STAT1 in HeLa, HeLa+UV, C6, C6+UV lysates using Phospho-STAT1 antibody.

Western blot analysis of Phospho-STAT1 in 3T3 lysates using Phospho-STAT1 antibody.

### Note:

For research use only, not for use in diagnostic procedure.

### Bioworld Technology, Inc.

Add: 1660 South Highway 100, Suite 500 St. Louis Park, MN 55416, USA.

Email: [info@bioworld.com](mailto:info@bioworld.com)

Tel: 6123263284

Fax: 6122933841

### Bioworld technology, co. Ltd.

Add: No 9, weidi road Qixia District Nanjing, 210046, P. R. China.

Email: [info@biogol.com](mailto:info@biogol.com)

Tel: 0086-025-68037686

Fax: 0086-025-68035151