

CDC42 monoclonal antibody

Catalog: MB10710

Host: Rabbit

Reactivity: Human, Rat

BackGround:

Rac and Cdc42 are members of the Rho-GTPase family. In mammals, Rac exists as three isoforms, Rac1, Rac2 and Rac3, which are highly similar in sequence. Rac1 and Cdc42, the most widely studied of this group, are ubiquitously expressed. Rac and Cdc42 play key signaling roles in cytoskeletal reorganization, membrane trafficking, transcriptional regulation, cell growth and development.

Product:

50mM Tris-Glycine(pH 7.4), 0.15M NaCl, 40% Glycerol, 0.01% Sodium azide and 0.05% BSA

Molecular Weight:

Calculated MW: 21 kDa; Observed MW: 21 kDa

Swiss-Prot:

P60953

Purification&Purity:

Affinity Purified

Applications:

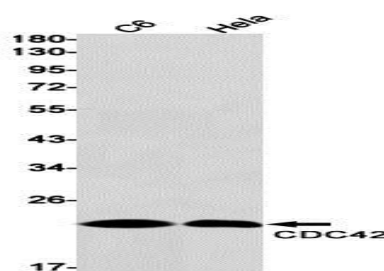
WB: 1/500-1/1000

Storage&Stability:

Store at 4 °C short term. Aliquot and store at -20 °C long term. Avoid freeze-thaw cycles.

Isotype:

IgG

DATA:


Western blot analysis of CDC42 in C6, HeLa lysates using CDC42 antibody.

Note:

For research use only, not for use in diagnostic procedure.

Bioworld Technology, Inc.

Add: 1660 South Highway 100, Suite 500 St. Louis Park, MN 55416, USA.

Email: info@bioworld.com

Tel: 6123263284

Fax: 6122933841

Bioworld technology, co. Ltd.

Add: No 9, weidi road Qixia District Nanjing, 210046, P. R. China.

Email: info@biogol.com

Tel: 0086-025-68037686

Fax: 0086-025-68035151