

MLH1 monoclonal antibody

Catalog: MB10336

Host: Rabbit

Reactivity: Human, Mouse, Rat

BackGround:

This gene was identified as a locus frequently mutated in hereditary nonpolyposis colon cancer (HNPCC). It is a human homolog of the E. coli DNA mismatch repair gene mutL, consistent with the characteristic alterations in microsatellite sequences (RER+ phenotype) found in HNPCC. Alternatively spliced transcript variants encoding different isoforms have been described, but their full-length natures have not been determined.

Product:

50mM Tris-Glycine (pH 7.4), 0.15M NaCl, 40% Glycerol, 0.01% Sodium azide and 0.05% BSA

Molecular Weight:

Calculated MW: 85 kDa; Observed MW: 85 kDa

Swiss-Prot:

P40692

Purification&Purity:

Affinity Purified

Applications:

WB: 1/500-1/1000 IF: 1/50-1/200 IP: 1/20

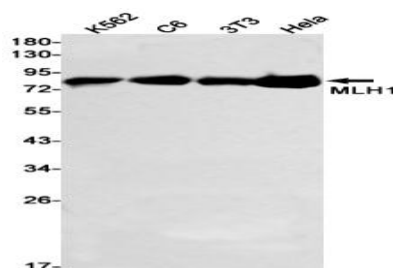
Storage&Stability:

Store at 4 °C short term. Aliquot and store at -20 °C long term. Avoid freeze-thaw cycles.

Isotype:

IgG

DATA:



Western blot analysis of MLH1 in K562, C6, 3T3, HeLa lysates using MLH1 antibody.

Immunocytochemistry analysis of MLH1 in HeLa using MLH1 antibody, and DAPI

Note:

For research use only, not for use in diagnostic procedure.

Bioworld Technology, Inc.

Add: 1660 South Highway 100, Suite 500 St. Louis Park, MN 55416, USA.

Email: info@bioworld.com

Tel: 6123263284

Fax: 6122933841

Bioworld technology, co. Ltd.

Add: No 9, weidi road Qixia District Nanjing, 210046, P. R. China.

Email: info@biogol.com

Tel: 0086-025-68037686

Fax: 0086-025-68035151