

NFE2L1 monoclonal antibody

Catalog: MB0168

Host: Mouse

Reactivity: Human

BackGround:

The NF-E2 DNA binding protein is composed of two subunits, p45 and MafK, and it regulates expression of globin genes in developing erythroid cells through interaction with Maf recognition elements (MAREs). A family of NF-E2-related proteins, which are collectively known as the cap 'n' collar (CNC) family and include NFE2L1 (also designated TCF11), Nrf2 and Nrf3, are bZIP transcription factors that heterodimerize with Maf proteins to bind MARE sequences. The Nrf proteins also bind the antioxidant response element (ARE) and are implicated in the regulation of detoxification enzymes and the oxidative stress response. They do so by heterodimerizing with Jun family members (c-Jun, Jun B and Jun D) to activate gene expression, specifically the detoxifying enzyme NQO1.

Product:

Purified mouse monoclonal in buffer containing 0.1M Tris-Glycine (pH 7.4, 150 mM NaCl) with 0.2% sodium azide, 50% glycerol

Molecular Weight:

Predicted band size: 67KDa

Observed band size: 72KDa

Swiss-Prot:

Q14494

Purification&Purity:

The antibody was affinity-purified from mouse ascites by

affinity-chromatography using epitope-specific immunogen and the purity is > 95% (by SDS-PAGE).

Applications:

WB: 1:1000

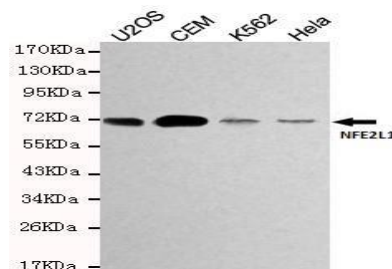
Storage&Stability:

Store at 4 °C short term. Aliquot and store at -20 °C long term. Avoid freeze-thaw cycles.

Specificity:

This antibody detects endogenous levels of NFE2L1 and does not cross-react with related proteins

DATA:



Western blot detection of NFE2L1 in HeLa, K562, CEM&U2OS cell lysates using NFE2L1 antibody (1:1000 diluted).

Note:

For research use only, not for use in diagnostic procedure.

Bioworld Technology, Inc.

Add: 1660 South Highway 100, Suite 500 St. Louis Park, MN 55416, USA.

Email: info@bioworld.com

Tel: 6123263284

Fax: 6122933841

Bioworld technology, co. Ltd.

Add: No 9, weidi road Qixia District Nanjing, 210046, P. R. China.

Email: info@biogot.com

Tel: 0086-025-68037686

Fax: 0086-025-68035151