

## Smad5 (C-terminus) monoclonal antibody

Catalog: MB0069

Host: Mouse

Reactivity: Human, Mouse

### BackGround:

Smad proteins, the mammalian homologs of the Drosophila Mothers against dpp (Mad) have been implicated as downstream effectors of TGF $\beta$ /BMP signaling. Smad1 (also designated Madr1 or JV4-1), Smad5 and mammalian Smad8 (also designated Smad9 or MADH6) are effectors of BMP2 and BMP4 function while Smad2 (also designated Madr2 or JV18-1) and Smad3 are involved in TGF $\beta$  and activin-mediated growth modulation. Smad4 (also designated DPC4) has been shown to mediate all of the above activities through interaction with various Smad family members. Smad6 and Smad7 regulate the response to activin/TGF $\beta$  signaling by interfering with TGF $\beta$ -mediated phosphorylation of other Smad family members.

### Product:

Purified mouse monoclonal in buffer containing 0.1M Tris-Glycine (pH 7.4, 150 mM NaCl) with 0.2% sodium azide, 50% glycerol

### Molecular Weight:

Predicted band size: 55KDa

Observed band size: 55KDa

### Swiss-Prot:

Q99717

### Purification&Purity:

The antibody was affinity-purified from mouse ascites by affinity-chromatography using epitope-specific immunogen and the purity is > 95% (by SDS-PAGE).

### Applications:

WB: 1:1000

ICC: 1:50~100

FC: 1:50~100

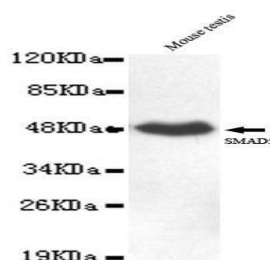
### Storage&Stability:

Store at 4 °C short term. Aliquot and store at -20 °C long term. Avoid freeze-thaw cycles.

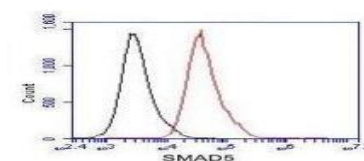
### Specificity:

This antibody detects endogenous levels of SMAD5 (C-terminus) and does not cross-react with related proteins

### DATA:



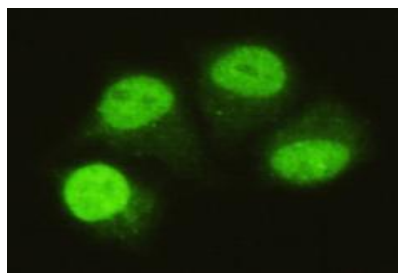
Western blot detection of SMAD5 antibody in Mouse testis cell lysates using SMAD5 antibody (1:1000 diluted).



By Bioworld Tech

Flow Cytometry analysis of Jurkat cells stained with SMAD5 (red, 1/100 dilution), followed by FITC-conjugated goat anti-mouse IgG.

Black line histogram represents the isotype control, normal mouse IgG.



Immunocytochemistry of HeLa cells using anti-SMAD5 (C-terminus) antibody diluted 1:75.

### Note:

For research use only, not for use in diagnostic procedure.

### Bioworld Technology, Inc.

Add: 1660 South Highway 100, Suite 500 St. Louis Park, MN 55416, USA.

Email: [info@bioworld.com](mailto:info@bioworld.com)

Tel: 6123263284

Fax: 6122933841

### Bioworld technology, co. Ltd.

Add: No 9, weidi road Qixia District Nanjing, 210046, P. R. China.

Email: [info@biogot.com](mailto:info@biogot.com)

Tel: 0086-025-68037686

Fax: 0086-025-68035151



## PRODUCT DATA SHEET

Bioworld Technology, Inc.

---

---

### **Bioworld Technology, Inc.**

Add: 1660 South Highway 100, Suite 500 St. Louis Park,  
MN 55416, USA.

Email: [info@bioworld.com](mailto:info@bioworld.com)

Tel: 6123263284

Fax: 6122933841

### **Bioworld technology, co. Ltd.**

Add: No 9, weidi road Qixia District Nanjing, 210046,  
P. R. China.

Email: [info@biogot.com](mailto:info@biogot.com)

Tel: 0086-025-68037686

Fax: 0086-025-68035151