

PPP4C monoclonal antibody

Catalog: MB0060

Host: Mouse

Reactivity: Human

BackGround:

Protein phosphatase 4C may be involved in microtubule organization. It binds 1 iron ion and 1 manganese ion per subunit. PP4 consists of a catalytic subunit PPP4C and a regulatory subunit. PPP4R1 and belongs to the PPP phosphatase family, PP X subfamily. Protein phosphatase that is involved in many processes such as microtubule organization at centrosomes, maturation of spliceosomal snRNPs, apoptosis, tumor necrosis factor (TNF)-alpha signaling, activation of c-Jun N-terminal kinase MAPK8, regulation of histone acetylation, DNA damage checkpoint signaling, NF-kappa-B activation and cell migration. The PPP4C-PPP4R1 PP4 complex may play a role in dephosphorylation and regulation of HDAC3. The PPP4C-PPP4R2-PPP4R3A PP4 complex specifically dephosphorylates H2AFX phosphorylated on Ser-140 (gamma-H2AFX) generated during DNA replication and required for DNA DSB repair. Dephosphorylates NDEL1 at CDK1 phosphorylation sites and negatively regulates CDK1 activity in interphase (By similarity)

Product:

Purified mouse monoclonal in buffer containing 0.1M Tris-Glycine (pH 7.4, 150 mM NaCl) with 0.2% sodium azide, 50% glycerol

Molecular Weight:

Predicted band size: 34KDa

Observed band size: 34KDa

Swiss-Prot:

P60510

Purification&Purity:

The antibody was affinity-purified from mouse ascites by affinity-chromatography using epitope-specific immunogen and the purity is > 95% (by SDS-PAGE).

Applications:

WB: 1:1000

ICC: 1:50~200

IHC: 1:500

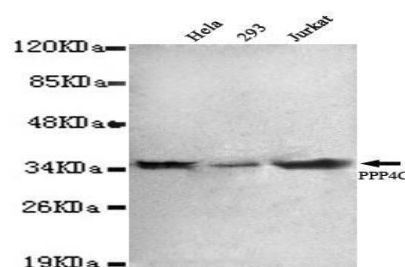
Storage&Stability:

Store at 4 °C short term. Aliquot and store at -20 °C long term. Avoid freeze-thaw cycles.

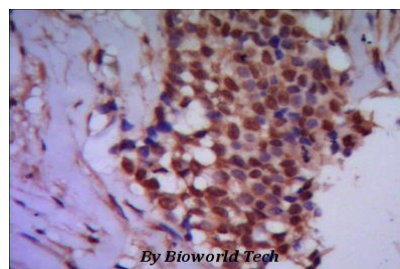
Specificity:

This antibody detects endogenous levels of PPP4C and does not cross-react with related proteins

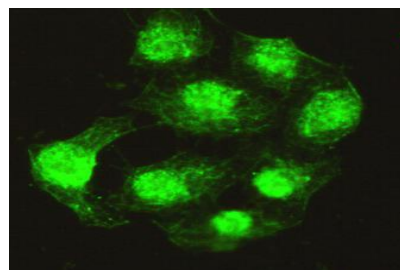
DATA:



Western blot detection of Protein Phosphatase 4C antibody in HeLa, 293&Jurkat cell lysates using Protein Phosphatase 4C antibody (1:1000 diluted) .



IHC of paraffin-embedded human breast cancer using anti-Protein Phosphatase 4C diluted 1/500-1/1000.



Immunocytochemistry of HeLa cells using anti- Protein Phosphatase 4C antibody diluted 1:200.

Bioworld Technology, Inc.

Add: 1660 South Highway 100, Suite 500 St. Louis Park, MN 55416, USA.

Email: info@bioworld.com

Tel: 6123263284

Fax: 6122933841

Bioworld technology, co. Ltd.

Add: No 9, weidi road Qixia District Nanjing, 210046, P. R. China.

Email: info@biogot.com

Tel: 0086-025-68037686

Fax: 0086-025-68035151



PRODUCT DATA SHEET

Bioworld Technology, Inc.

Note:

For research use only, not for use in diagnostic procedure.

Bioworld Technology, Inc.

Add: 1660 South Highway 100, Suite 500 St. Louis Park,
MN 55416, USA.

Email: info@bioworld.com

Tel: 6123263284

Fax: 6122933841

Bioworld technology, co. Ltd.

Add: No 9, weidi road Qixia District Nanjing, 210046,
P. R. China.

Email: info@biogot.com

Tel: 0086-025-68037686

Fax: 0086-025-68035151