

## ERR $\gamma$ polyclonal antibody

Catalog: GCP51

Host: Rabbit

Reactivity: Human

### BackGround:

ERR $\beta/\gamma$  Antibody (E-1) is a high quality monoclonal ERR $\beta/\gamma$  antibody (also designated ERR $\beta/\gamma$  antibody) suitable for the detection of the ERR $\beta/\gamma$  protein of mouse, rat and human origin. ERR $\beta/\gamma$  Antibody (E-1) is available as both the non-conjugated anti-ERR $\beta/\gamma$  antibody form, as well as multiple conjugated forms of anti-ERR $\beta/\gamma$  antibody, including agarose, HRP, PE, FITC and multiple Alexa Fluor® conjugates. Estrogen and progesterone receptors are members of a family of transcription factors that are regulated by the binding of their cognate ligands. The interaction of hormone-bound estrogen receptors with estrogen responsive elements (EREs) alters transcription of ERE-containing genes. Estrogen receptor-related proteins (ERR $\alpha$ ,  $\beta$  and  $\gamma$ ) are orphan nuclear receptors. Like estrogen receptors, ERRs bind specifically to EREs to activate reporter genes. ERR $\beta$ , also known as steroid hormone receptor ERR2 or estrogen receptor-like 2, is expressed during mammary gland development and is critical in embryo development. The loss of ERR $\beta$  results in severely impaired chorion formation leading to placental failure and embryonic death. ERR $\beta$  also potentially represses the transcriptional activity of Nrf2. ERR $\gamma$ , also known as ERR3, is abundantly expressed in fetal heart. The loss of ERR $\gamma$  results in lactatemia and death within the first week of life.

### Product:

Rabbit IgG, 1mg/ml in PBS with 0.02% sodium azide, 50% glycerol, pH7.4.

### Molecular Weight:

~ 60 kDa

### Swiss-Prot:

P62508

### Purification&Purity:

The antibody was affinity-purified from rabbit antiserum by affinity-chromatography using epitope-specific im-

munogen and the purity is &gt; 95% (by SDS-PAGE).

### Applications:

WB: 1:1000~1:2000

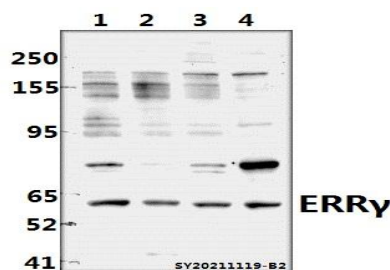
### Storage&Stability:

Store at 4 °C short term. Aliquot and store at -20 °C long term. Avoid freeze-thaw cycles.

### Specificity:

ERR $\gamma$  polyclonal antibody detects endogenous levels of ERR $\gamma$  protein.

### DATA:



Western blot (WB) analysis of ERR $\gamma$  polyclonal antibody at 1:1000 dilution

Lane1:A549 whole cell lysate(40ug)

Lane2:SGC7901 whole cell lysate(40ug)

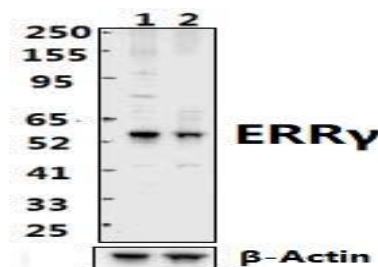
Lane3:Panc1 whole cell lysate(40ug)

Lane4:HCT116 whole cell lysate(40ug)

Western blot (WB) analysis of ERR $\gamma$  pAb at 1:1000 dilution

Lane1:A549 whole cell lysate(40ug)

Lane2:ESRRG knockdown A549 whole cell lysate(40ug)



### Note:

For research use only, not for use in diagnostic procedure.

### Bioworld Technology, Inc.

Add: 1660 South Highway 100, Suite 500 St. Louis Park, MN 55416, USA.

Email: [info@bioworld.com](mailto:info@bioworld.com)

Tel: 6123263284

Fax: 6122933841

### Bioworld technology, co. Ltd.

Add: No 9, weidi road Qixia District Nanjing, 210046, P. R. China.

Email: [info@biogot.com](mailto:info@biogot.com)

Tel: 0086-025-68037686

Fax: 0086-025-68035151



## PRODUCT DATA SHEET

Bioworld Technology, Inc.

---

---

### **Bioworld Technology, Inc.**

Add: 1660 South Highway 100, Suite 500 St. Louis Park,  
MN 55416, USA.

Email: [info@bioworld.com](mailto:info@bioworld.com)

Tel: 6123263284

Fax: 6122933841

### **Bioworld technology, co. Ltd.**

Add: No 9, weidi road Qixia District Nanjing, 210046,  
P. R. China.

Email: [info@biogot.com](mailto:info@biogot.com)

Tel: 0086-025-68037686

Fax: 0086-025-68035151