

**FBLN2 polyclonal antibody**

Catalog: BZ17074

Host: Rabbit

Reactivity: Human, Mouse

**BackGround:**

FBLN2: fibulin 2. This gene encodes an extracellular matrix protein, which belongs to the fibulin family. This protein binds various extracellular ligands and calcium. It may play a role during organ development, in particular, during the differentiation of heart, skeletal and neuronal structures. Alternatively spliced transcript variants encoding different isoforms have been identified.

**Product:**

PBS containing 50% glycerol, 0.5% BSA and 0.02% sodium azide.

**Molecular Weight:**

Calculated MW: 127 kDa; Observed MW: 127 kDa

**Swiss-Prot:**

P98095

**Purification&Purity:**

Affinity Purified

**Applications:**

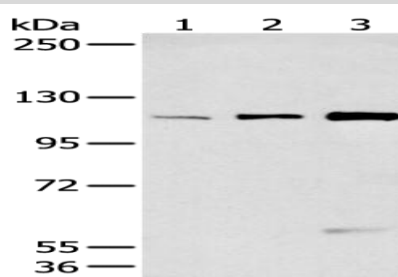
WB: 1/500-1/2000

**Storage&Stability:**

Store at 4 °C short term. Aliquot and store at -20 °C long term. Avoid freeze-thaw cycles.

**Isotype:**

IgG

**DATA:**

Western blot analysis of FBLN2 in HeLa, A549 and 293T lysates using FBLN2 antibody.

**Note:**

For research use only, not for use in diagnostic procedure.

**Bioworld Technology, Inc.**

Add: 1660 South Highway 100, Suite 500 St. Louis Park, MN 55416, USA.

Email: [info@bioworld.com](mailto:info@bioworld.com)

Tel: 6123263284

Fax: 6122933841

**Bioworld technology, co. Ltd.**

Add: No 9, weidi road Qixia District Nanjing, 210046, P. R. China.

Email: [info@biogol.com](mailto:info@biogol.com)

Tel: 0086-025-68037686

Fax: 0086-025-68035151