

**Rab9 polyclonal antibody**

Catalog: BZ16629

Host: Rabbit

Reactivity: Human, Mouse, Rat

**BackGround:**

Involved in the transport of proteins between the endosomes and the trans Golgi network. Interacts (preferentially in its GTP-bound form) with GCC2 (via its GRIP domain).

**Product:**

Rabbit IgG in phosphate buffered saline , pH 7.4, 150mM NaCl, 0.02% sodium azide and 50% glycerol.

**Molecular Weight:**

Calculated MW: 23 kDa; Observed MW: 23 kDa

**Swiss-Prot:**

P51151

**Purification&Purity:**

Affinity Purified

**Applications:**

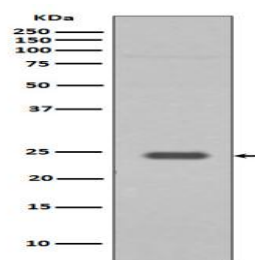
WB: 1/500-1/1000 IF: 1/50-1/200

**Storage&Stability:**

Store at 4 °C short term. Aliquot and store at -20 °C long term. Avoid freeze-thaw cycles.

**Isotype:**

IgG

**DATA:**

Western blot analysis of Rab9 in HepG2 lysates using Rab9 antibody.

**Note:**

For research use only, not for use in diagnostic procedure.

**Bioworld Technology, Inc.**

Add: 1660 South Highway 100, Suite 500 St. Louis Park,  
MN 55416, USA.

Email: [info@bioworld.com](mailto:info@bioworld.com)

Tel: 6123263284

Fax: 6122933841

**Bioworld technology, co. Ltd.**

Add: No 9, weidi road Qixia District Nanjing, 210046,  
P. R. China.

Email: [info@biogol.com](mailto:info@biogol.com)

Tel: 0086-025-68037686

Fax: 0086-025-68035151