

DUSP8 polyclonal antibody

Catalog: BZ16023

Host: Rabbit

Reactivity: Human, Mouse

BackGround:

Has phosphatase activity with synthetic phosphatase substrates and negatively regulates mitogen-activated protein kinase activity, presumably by catalysing their dephosphorylation.

Product:

PBS containing 50% glycerol, 0.5% BSA and 0.02% sodium azide.

Molecular Weight:

Calculated MW: 66 kDa; Observed MW: 66 kDa

Swiss-Prot:

Q13202

Purification&Purity:

Affinity Purified

Applications:

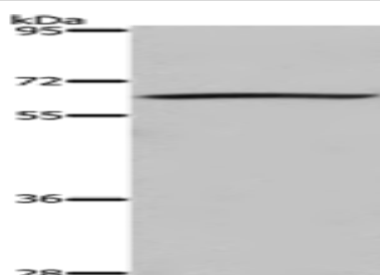
WB: 1/1000-1/2000

Storage&Stability:

Store at 4 °C short term. Aliquot and store at -20 °C long term. Avoid freeze-thaw cycles.

Isotype:

IgG

DATA:

Western blot analysis of DUSP8 in 293T lysates using DUSP8 antibody.

Note:

For research use only, not for use in diagnostic procedure.

Bioworld Technology, Inc.

Add: 1660 South Highway 100, Suite 500 St. Louis Park, MN 55416, USA.

Email: info@bioworld.com

Tel: 6123263284

Fax: 6122933841

Bioworld technology, co. Ltd.

Add: No 9, weidi road Qixia District Nanjing, 210046, P. R. China.

Email: info@biogol.com

Tel: 0086-025-68037686

Fax: 0086-025-68035151