

Raly (R103) polyclonal antibody

Catalog: BS9249

Host: Rabbit

Reactivity: Human, Mouse, Rat

BackGround:

Raly, also known as hnRNP associated with lethal yellow homolog, autoantigen p542 or heterogeneous nuclear ribonucleoprotein C-like 2 (hnRNPCL2), is a 306 amino acid protein belonging to the RRM HNRPC family. Localized to the nucleus, Raly is thought to be an RNA-binding protein involved in pre-mRNA splicing. Phosphorylated upon DNA damage, Raly has been found to be a subunit of the spliceosome C complex. Raly is also an autoantigen that is crossreactive with an Epstein-Barr virus protein. Raly is expressed at higher levels in pancreas, liver, skeletal muscle, lung, brain, heart and kidney with lower levels found in placenta. Produced by alternative splicing, Raly is expressed as two isoforms.

Product:

1 mg/ml in Phosphate buffered saline (PBS) with 0.05% sodium azide, approx. pH 7.2.

Molecular Weight:

~ 32 kDa

Swiss-Prot:

Q9UKM9

Purification&Purity:

The antibody was affinity-purified from rabbit antiserum by affinity-chromatography using epitope-specific immunogen and the purity is > 95% (by SDS-PAGE).

Applications:

WB: 1:500~1:1000

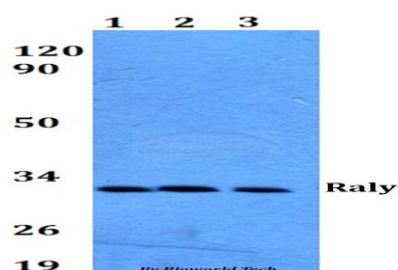
Storage&Stability:

Store at 4 °C short term. Aliquot and store at -20 °C long term. Avoid freeze-thaw cycles.

Specificity:

Raly (R103) polyclonal antibody detects endogenous levels of Raly protein.

DATA:



Western blot (WB) analysis of Raly (R103) polyclonal antibody at 1:500 dilution

Lane1: HEK293T whole cell lysate

Lane2: Raw264.7 whole cell lysate

Lane3: PC12 whole cell lysate

Note:

For research use only, not for use in diagnostic procedure.

Bioworld Technology, Inc.

Add: 1660 South Highway 100, Suite 500 St. Louis Park, MN 55416, USA.

Email: info@bioworld.com

Tel: 6123263284

Fax: 6122933841

Bioworld technology, co. Ltd.

Add: No 9, weidi road Qixia District Nanjing, 210046, P. R. China.

Email: info@biogot.com

Tel: 0086-025-68037686

Fax: 0086-025-68035151