

RREB1 (E597) polyclonal antibody

Catalog: BS9158

Host: Rabbit

Reactivity: Human, Mouse, Rat

BackGround:

RREB1 (Ras responsive element binding protein 1), also known as FINB, LZ321 or Zep-1, is a 1,687 amino acid protein that localizes to nuclear speckles and contains fifteen C2H2-type zinc fingers. Expressed in pancreas, heart, liver, placenta, lung, kidney and skeletal muscle, RREB1 functions as a transcription factor that binds to the Ras-responsive element (RRE) of target gene promoters, thereby inducing their transcription. In addition, RREB1 is thought to be involved in Raf/Ras-mediated cell differentiation, possibly by enhancing the expression of Calcitonin, a hormone that is produced by the thyroid gland and plays an essential role in maintaining blood calcium levels. Due to its involvement in cell differentiation events, RREB1 may be involved in Raf/Ras-related tumor formation. Four isoforms of RREB1 exist due to alternative splicing.

Product:

Rabbit IgG, 1mg/ml in PBS with 0.02% sodium azide, 50% glycerol, pH7.2

Molecular Weight:

~ 181 kDa

Swiss-Prot:

Q92766

Purification&Purity:

The antibody was affinity-purified from rabbit antiserum by affinity-chromatography using epitope-specific immunogen and the purity is > 95% (by SDS-PAGE).

Applications:

WB: 1:500~1:1000

IHC: 1:100~1:200

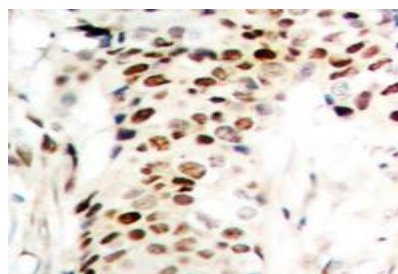
Storage&Stability:

Store at 4 °C short term. Aliquot and store at -20 °C long term. Avoid freeze-thaw cycles.

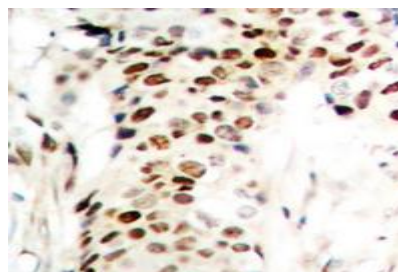
Specificity:

RREB1 (E597) polyclonal antibody detects endogenous levels of RREB1 protein.

DATA:



Western blot analysis of RREB1 expression in HeLa (A), NIH3T3 (B), rat brain (C) whole cell lysates.



Immunohistochemical analysis of RREB1 staining in human breast cancer formalin fixed paraffin embedded tissue section.

Note:

For research use only, not for use in diagnostic procedure.

Bioworld Technology, Inc.

Add: 1660 South Highway 100, Suite 500 St. Louis Park, MN 55416, USA.

Email: info@bioworld.com

Tel: 6123263284

Fax: 6122933841

Bioworld technology, co. Ltd.

Add: No 9, weidi road Qixia District Nanjing, 210046, P. R. China.

Email: info@biogot.com

Tel: 0086-025-68037686

Fax: 0086-025-68035151