

## PTP $\alpha$ (I792) polyclonal antibody

Catalog: BS9115

Host: Rabbit

Reactivity: Human, Mouse, Rat

### Background:

Protein tyrosine phosphatases, or PTPs, are type I transmembrane proteins, membrane associated proteins or proteins localized in nuclei. Examples of transmembrane PTPs are LAR, PTP $\alpha$ , PTP $\beta$ , PTP $\gamma$ , PTP $\delta$ , PTP $\epsilon$ , PTP $\zeta$ , PTP $\kappa$ , PTP $\mu$  and PTP $\sigma$ . Transmembrane PTP $\sigma$  play diverse roles during development and in adult tissues. Immunodepletion studies have suggested LAR to be a regulator of Insulin receptor phosphorylation. PTP $\alpha$  activity is increased twofold in response to phorbol ester stimulation, resulting in serine phosphorylation either directly or indirectly by members of the PKC family.

### Product:

1 mg/ml in Phosphate buffered saline (PBS) with 0.05% sodium azide, approx. pH 7.2.

### Molecular Weight:

~ 91 kDa

### Swiss-Prot:

P18433

### Purification&Purity:

The antibody was affinity-purified from rabbit antiserum by affinity-chromatography using epitope-specific immunogen and the purity is > 95% (by SDS-PAGE).

### Applications:

WB: 1:500~1:1000

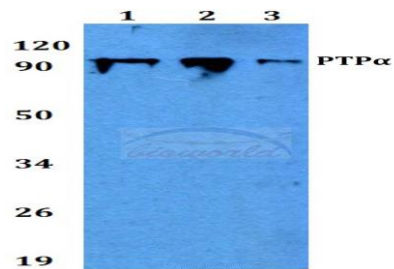
### Storage&Stability:

Store at 4 °C short term. Aliquot and store at -20 °C long term. Avoid freeze-thaw cycles.

### Specificity:

PTP $\alpha$  (I792) polyclonal antibody detects endogenous levels of PTP $\alpha$  protein.

### DATA:



Western blot (WB) analysis of PTP $\alpha$  (I792) polyclonal antibody at 1:500 dilution

Lane1:HEK293T whole cell lysate

Lane2:Raw264.7 whole cell lysate

Lane3:PC12 whole cell lysate

### Note:

For research use only, not for use in diagnostic procedure.

### Bioworld Technology, Inc.

Add: 1660 South Highway 100, Suite 500 St. Louis Park, MN 55416, USA.

Email: [info@bioworld.com](mailto:info@bioworld.com)

Tel: 6123263284

Fax: 6122933841

### Bioworld technology, co. Ltd.

Add: No 9, weidi road Qixia District Nanjing, 210046, P. R. China.

Email: [info@biogot.com](mailto:info@biogot.com)

Tel: 0086-025-68037686

Fax: 0086-025-68035151